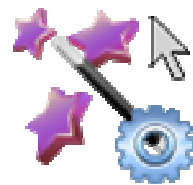


# Pointing Wizard 1.2



## Software for Adjusting Mouse Settings

### User Guide

Created By: Koester Performance Research  
Contact: [info@kpronline.com](mailto:info@kpronline.com)  
Website: [www.kpronline.com](http://www.kpronline.com)

Copyright 2010, 2011 by Koester Performance Research

# Table of Contents

<b>About the Pointing Wizard</b>	<b>3</b>
Overview	3
Accessibility	4
Getting Started	5
Getting Started	5
Screen Overview	6
Navigation Overview	7
<b>Pointing Wizard Screens</b>	<b>8</b>
Welcome Page	8
Part 1 - Single-click Settings	10
Basic Target Selection - Introduction	10
Basic Target Selection	11
View Basic Target Recommendations	13
Practice with the Recommended Settings	15
Select Targets Using the Recommended Settings	16
Review Your Results	17
Select Your Settings - Basic	20
Select Your Settings - Advanced	21
Part 1 Complete	22
Part 2 - Double-click Settings	23
Double-click Pointing Task - Introduction	23
Double-click Pointing Task	24
View Double-click Recommendations	25
Practice with the Recommended Settings	27
Double-click Using the Recommended Settings	28
Review Your Results	29
Select Your Settings - Basic	32
Select Your Settings - Advanced	33
Part 2 Complete	34
Finish	35
<b>About Mouse Settings</b>	<b>36</b>
Learn More PopUp	36
Object Size	38
Pointer Speed	41
Enhance Pointer Precision	42
Double-click Time	43
Double-click Distance	44
Use Double Clicks	45
How the Wizard Does It	46
<b>Pointing Wizard Report</b>	<b>48</b>
View Report	48
Report Overview	49
Report Sections	50
Summary	50
Original Settings	51
Results of Basic Target Selection Task	52
Recommended Settings for Basic Target Selection	53
Results of Second Basic Target Selection Task	54
Results of Double-click Task	55
Recommended Settings for Double-click Task	56
Results of Second Double-click Task	57
Final Settings	58
Description of Pointing Device Settings	59

<b>Pointing Wizard Batch Files</b>	<b>60</b>
Batch File Overview	60
Save Batch File	61
Using Batch Files	63
Batch File Content	64
<b>Restore Default Settings</b>	<b>66</b>
Restore Defaults Overview	66
How to Restore Defaults	67
<b>Contact Us</b>	<b>69</b>
About KPR	69
Technical Support	70
Development Team	71
<b>Index</b>	<b>72</b>

## Overview

The Pointing Wizard is a program to help you determine the most effective mouse settings for you. The idea is to make it easier and more productive to use your mouse (or other pointing device), by having the computer adjust itself to your needs. Pointing Wizard leads you through a series of steps designed to assess your pointing style and makes recommendations for changes to the settings if appropriate.

The mouse settings that are currently checked by the wizard are [Object Size](#), [Pointer Speed](#), [Enhance Pointer Precision](#), [Double-click Time](#), [Double-click Distance](#), and [Use Double-clicks](#). These settings are all built into Windows, and most can be adjusted manually using the Windows Control Panel. However, adjusting these settings manually requires time, knowledge of how to access each setting, and knowledge of how to adjust the settings to fit your particular needs. The Pointing Wizard provides a simpler way to adjust the settings and provides guidance about the values that should be used for each setting.

For each session, a [report](#) is created that may be useful for sharing results with family members, funding sources, and assistive technology (AT) professionals. The report may also be useful for tracking changes in user performance over time.

Note that the Pointing Wizard does not consider all possible interventions that can assist with mouse use. Users may also benefit from an evaluation by an AT professional with experience with computer access issues.

## Accessibility

The Pointing Wizard is designed to be accessible to users with a wide range of abilities. It should work with any type of mouse or pointing device that is fully compatible with your computer's operating system and hardware.

### Keyboard Access

The functions of all of the buttons and check boxes in the Pointing Wizard can be accessed by using the keyboard shortcuts assigned to each button. To use a shortcut, press the **ALT** key in combination with the shortcut key to have the same effect as clicking that button. The letter in the button's label that is underlined is the shortcut key. It is usually, but not always, the first letter of the label. For example, the shortcut for clicking on the Next button is **ALT-N**.

To see the shortcut underlines, press and hold the **ALT** key. You can also set your computer to show the shortcuts all the time. If your computer has Windows 7 or Vista, go to the Ease of Access Center, and click **Make the keyboard easier to use**; then select the **Underline keyboard shortcuts and access keys** check box. In Windows XP, use the Display Control Panel, click the **Appearance** tab, then the **Effects...** button. Uncheck the **Hide underlined letters** checkbox.

### Text Size

To make the characters seem larger, you can adjust the screen resolution on your computer. For Win 7 or Vista systems, under the Appearance and Personalization heading, click on **Adjust screen resolution**. Use the Resolution slider to change the clarity of the display. At lower resolutions, text is larger and easier to see but will not appear as sharp and may have jagged edges.

For XP systems, open the Display properties, click on the **Settings** tab, then use the Screen resolution slider to adjust the clarity of the display. At lower resolutions, text is larger and easier to see but will not appear as sharp and may have jagged edges.

If you find instances where the Pointing Wizard is not fully compatible with your assistive technology, please let us know, at **contact@kpronline.com**.

## Getting Started

The Pointing Wizard is a program to help you determine the most effective mouse settings for you. As the name implies, it is designed as a wizard type of program. This means that it walks you through the necessary steps in the program. Once you launch the Pointing Wizard, you perform the step presented on each screen, and click **Next** to move to the next step. That's pretty much all there is to it.

For more information about the screen layout and navigation in Pointing Wizard, see [Screen Overview](#) and [Navigation Overview](#).

You can learn more about the details of each step in the Pointing Wizard by looking at the help page for each Pointing Wizard screen.

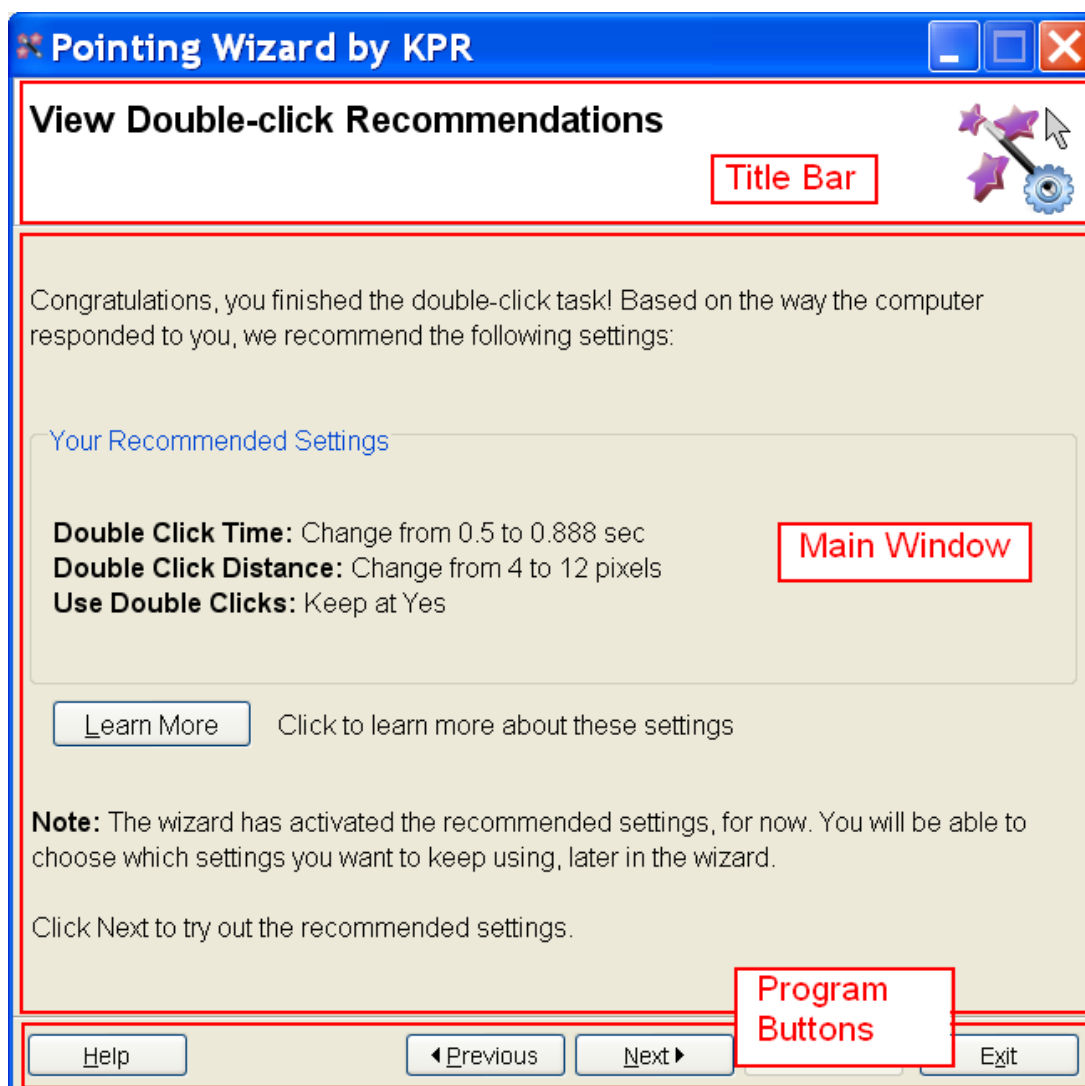
## Screen Overview

Each screen in the Pointing Wizard contains a Title Bar, Main Window, and Program Buttons.

The Title Bar, at the top of the screen, shows the current step and may provide additional information about that step.

The Main Window provides information you need to perform the pointing tasks, review your results, and move through the wizard. All of the pointing tasks are performed within the Main Window.

The Program Buttons are located at the bottom of each Main Window. The same buttons appear in each screen, but not all buttons are active each time. The functions of the buttons stay consistent throughout the program but perform slightly different actions depending on the steps that have been completed. For more information about the program buttons, see [Navigation Overview](#).



## Navigation Overview

Clicking the **Help** button brings up the full Pointing Wizard help system.

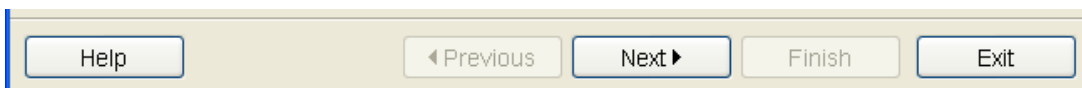
In addition to using the full help system, tool tips are also available for many of the features. Hold the mouse cursor over an item on the screen and a short description of the item or its function will appear.

The **Previous** button returns you to the prior step in the process. You may be asked whether you wish to discard data and start a step over when moving back to steps that gather information about your pointing style.

Clicking the **Next** button moves you to the following step in the process. We suggest that you read the information in each of the Main Windows before moving to the next step.

The **Finish** button becomes active when you have completed the Wizard. This may happen at different points in the process depending on the results of the pointing tasks. Clicking on **Finish** will close the program. The Main Window text will provide you with information on the mouse settings that will be used after you finish.

The **Exit** button allows you to quit the program at any point in the process. Exiting will restore the original mouse settings that were active before the current Pointing Wizard session. You will be asked if you are sure you want to return to the original settings before a final exit takes place.



## Welcome Page

The Pointing Wizard opens to the Welcome page each time you start the program. The Main Window text provides a brief description of the Wizard and an overview of the steps involved in the process.

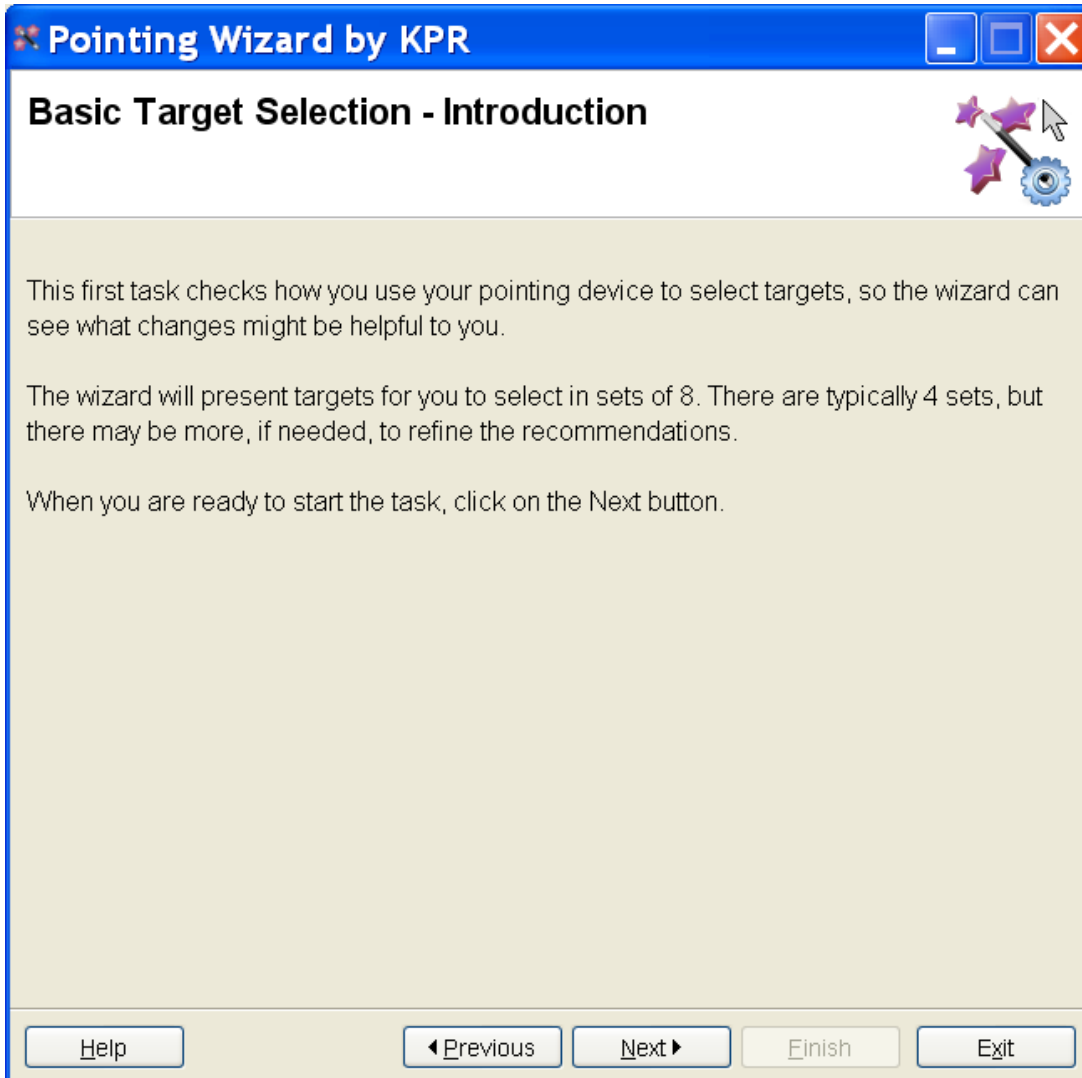
Note that there are two main sections to the Pointing Wizard. Part 1 focuses on settings that relate to basic target selection using single-click (specifically, the [Object Size](#), [Pointer Speed](#) and [Enhance Pointer Precision](#) settings). Part 2 recommends settings related to double-clicking (specifically, the [Double-Click Time](#), [Double-Click Distance](#), and [Use Double-Clicks](#)).

By default, the wizard will start on Part 1. However, on the Welcome Page, you do have the option to skip Part 1 and start immediately with Part 2. To do this, just select the **Skip Part 1** button, before clicking **Next** to move to the next step. If you haven't run Pointing Wizard before, we suggest you start at Part 1 and go through both sections of the wizard. Once you are familiar with the wizard and how it relates to your needs, you can pick and choose the sections that are most relevant to you.



## Basic Target Selection - Introduction

This screen provides an introduction and instructions for the first pointing task. When you click **Next** on this screen, the basic target selection task will begin.



## Basic Target Selection Task

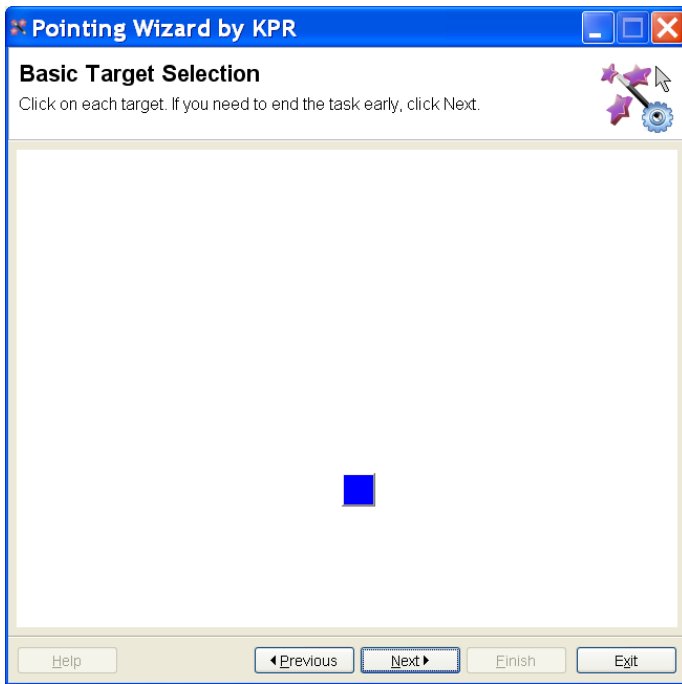
This is the screen for the basic target selection task. The Main Window displays a series of targets for you to select. Each target is a blue square, in one of two sizes. Move your mouse cursor into the square, and click on it to select. When you've successfully clicked on the target, it will disappear, and the next target will appear.

The task begins as soon as the first square appears. Targets are presented in sets of 8. Typically, the wizard will present 4 sets of targets, for a total of 32 targets.

After you've completed each set of 8 targets, the wizard will adjust your mouse speed up or down, depending on the data it has collected so far. After each set of targets, a dialog box will appear, letting you know how many sets remain. Click **OK** to begin the next set.

With each set of targets, the wizard is learning more about what mouse speed works best for you. If you are pressed for time, however, you may stop the task by clicking the **Next** button while in the middle of the task.

This task is timed to assist in gathering complete information about the effectiveness of your mouse settings. You have 30 seconds to acquire each target before the target disappears and the next target is presented. You should try to perform the task quickly and efficiently, but do not hurry or try to work at a speed that you cannot maintain over time.



## View Basic Target Recommendations

This page opens when you have completed the first basic target task. If the mouse settings are well matched with your pointing style, no changes will be suggested.

If the current mouse settings do not seem to be the most effective for your pointing style, new settings will be recommended. The current settings and the suggested changes will be displayed in the Main Window. You will have the opportunity to learn more about each setting by clicking the [Learn More](#) button. The settings that can be changed are to increase [Object Size](#), to adjust the [Pointer Speed](#) and to turn [Enhance Pointing Precision](#) on or off.

Click the **Next** button to continue to the next step where you can try out the suggested settings. The suggested mouse settings for your computer will be active at that point, but you must [Finish](#) the wizard process to keep them active. You will have the opportunity to select the settings you wish to change later in the process.



If you wish to retry the single-click task, click the **Previous** button. A pop-up window will open to confirm that you would like to restart the task. Clicking the **Yes – Start again with new targets** button will return you to the [Basic Target Selection Task](#) where you will be able to repeat the task. The data from the previous targets are not saved and will not be used to determine appropriate mouse settings. Clicking the **Cancel** button will return you to the View Basic Target Recommendations screen.

## Practice with the Recommended Settings

The Main Window of this page displays four buttons that you can click on to practice using the new settings. Practice is optional, but lets you get a feel for whether you like the recommended settings. You can practice as much as you like until you feel comfortable with the settings.

When you've successfully selected a button, it will turn into a smiley face. To get more practice, click the **Reset Practice** button to turn the smiles back into buttons.

When you are done practicing, you can perform a second basic target task to learn how your pointing speed and accuracy using the new settings compare with your results with the initial settings. Check the **Present a timed target task as my next step** box and then click the **Next** button to perform the comparison.

If you do not wish to compare results, click the **Next** button to continue on to select the settings you wish to use when you complete the Pointing Wizard.



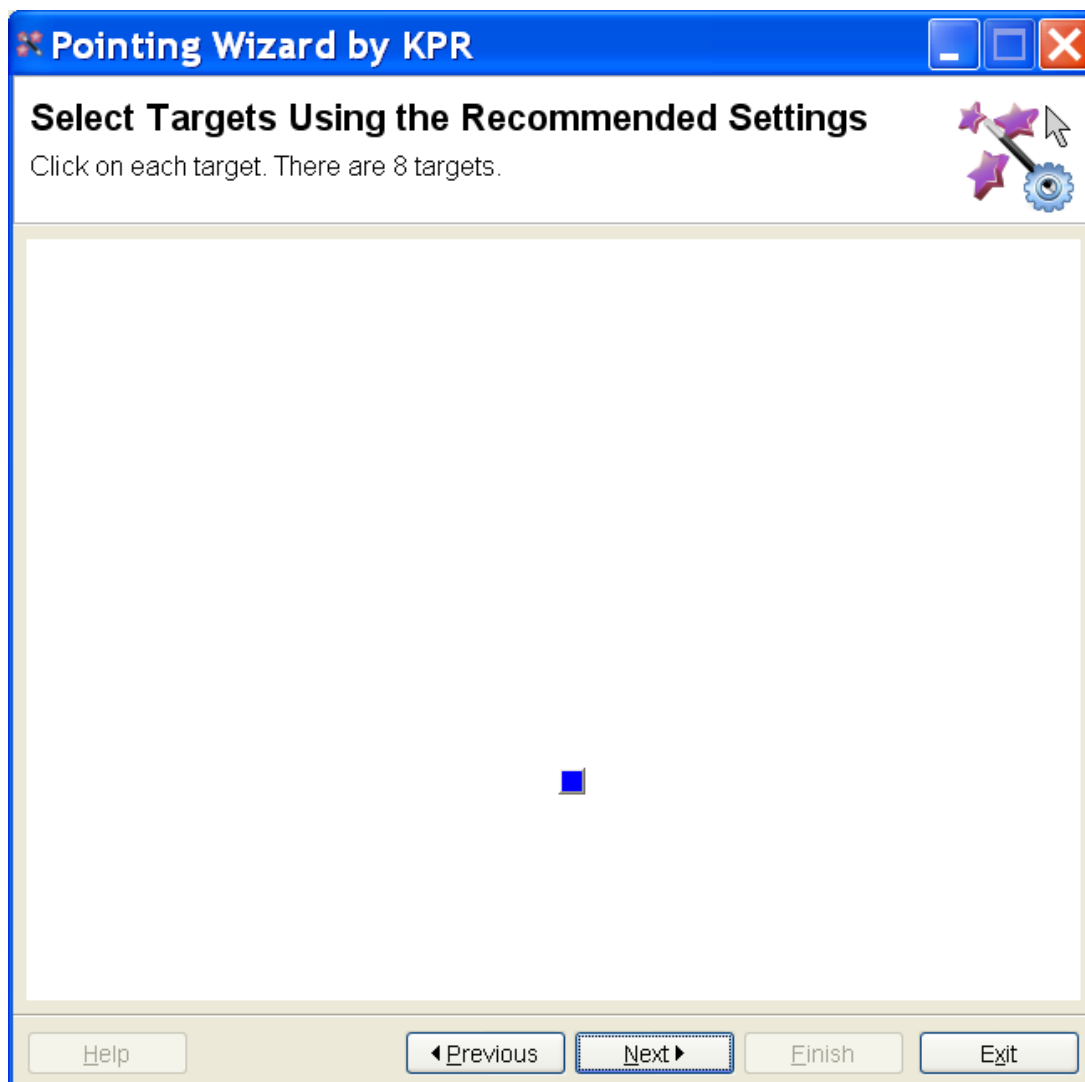
## Select Targets using the Recommended Settings

This is the screen for the second basic target selection task. The purpose is to let you compare your performance using the recommended settings vs. your initial performance using your original settings. The task is the same as the one you completed previously in the [Basic Target Selection](#) screen.

The Main Window displays a series of targets for you to select. Each target is a blue square, in one of two sizes. Move your mouse cursor into the square, and click on it to select. When you've successfully clicked on the target, it will disappear, and the next target will appear.

The task begins as soon as the first target appears. After you've selected 8 targets, the task will end.

Note that doing the second timed pointing task is optional. This screen is only displayed if you checked the **Present a timed target task as my next step** box in the [Practice With Recommended Settings](#) screen before clicking the **Next** button.



## Review Your Results

If you complete two basic target selection tasks, one with original and one with recommended settings, this screen displays results and shows you the differences in speed and accuracy between the tasks. If both measurements show significant improvements, the recommendation will be to use the changes the wizard suggested.

If the results do not show improvement in both speed and accuracy, there may not be a definite recommendation. You should consider using the suggested settings while doing your normal computer activities. This additional practice may improve your ability to use these settings and will give you a chance to see whether you like using them. After you have more experience with these settings, consider running the Pointing Wizard again to reevaluate how the settings match your abilities.

If your speed and accuracy decreased with the new settings, the recommendation will be to click the **Previous** button and get more practice using the new settings. If speed and accuracy do not improve after an additional task, you may want to return to your initial settings or accept the changes and practice using these settings while doing your normal computer activities. You should rerun the Pointing Wizard after you have more experience with these settings to reevaluate the best settings.



No matter what the wizard recommends, the final decision of what settings to use is up to you. When you click on the **Next** button, you will have the option to select some or all of the recommended settings before exiting the program.

If you would like to see more in-depth results from the two tests, click on the **Show Details** button. This will display a table with your speed and accuracy for each task, as well as the settings for each task. Speed is displayed in seconds, representing the average time to select each target. Clicks shows the average number of clicks you made to select each target; a lower number of clicks reflects better accuracy. To go back to the simplified results page, click on the **Hide Details** button.



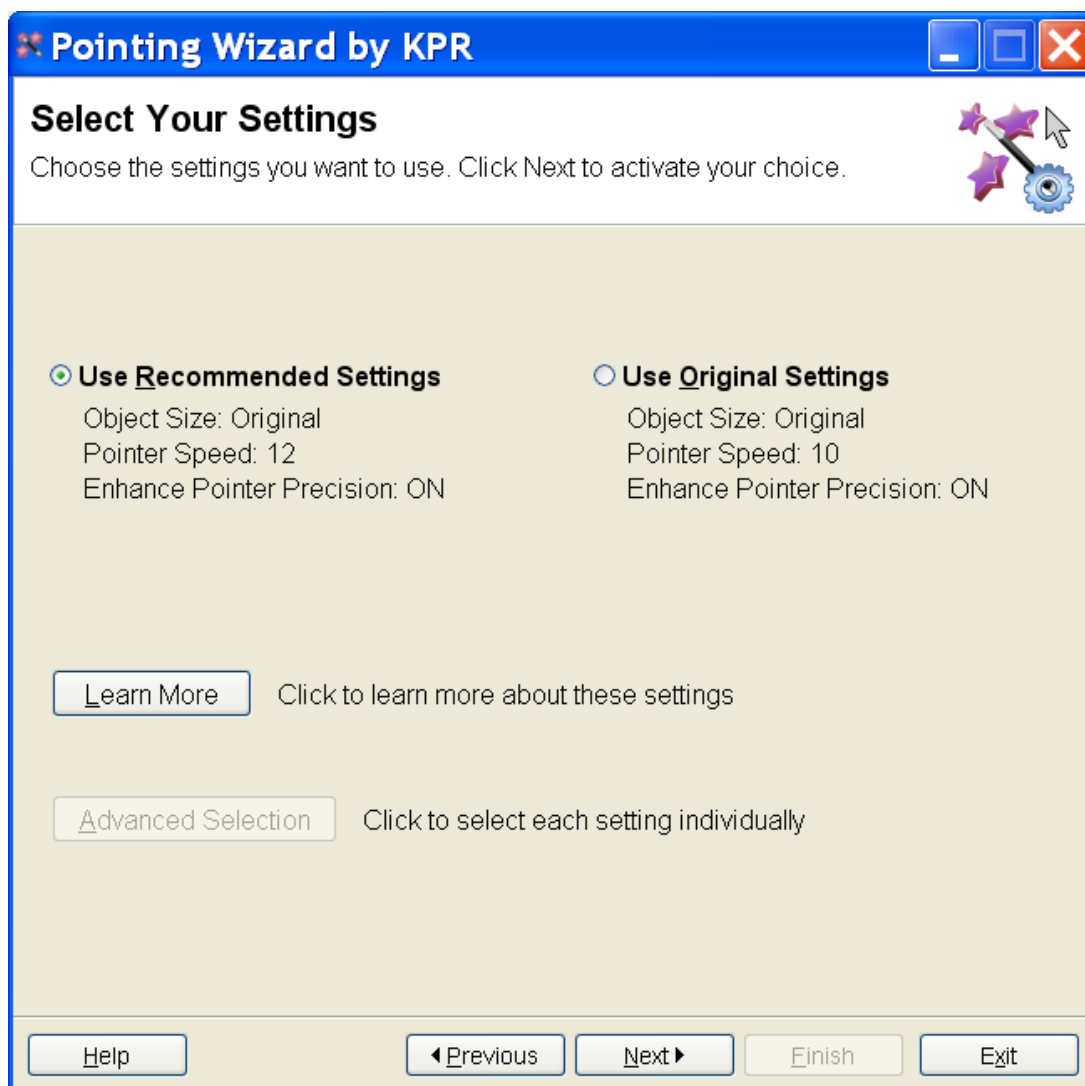
Note that the Review Your Results screen is only displayed after completion of the target task in the [Select Targets Using the Recommended Settings](#) screen. If you did not check the **Present a timed target task as my next step** box in the [Practice With Recommended Settings](#) screen, the wizard will move to the [Select Your Settings](#) screen without running a second target task or displaying the results of that task.

## Select Your Settings - Basic

You can choose to use the settings recommended by the Pointing Wizard or use the settings that were in place when you started the program. The values for each setting are listed below the two options. Click the button next to the option you wish to select, then click the **Next** button to continue. Using the full set of recommended settings is the default option.

You may also choose to use some combination of the recommended and original settings rather than using all of the suggestions as a package. Click the [Advanced Selection](#) button to select individual settings. Note that the Advanced Selection button will be grayed out if only one change is recommended.

Click the [Learn More](#) button to get additional information on the settings that can be changed.



## Select Your Settings - Advanced

This screen allows you to use a combination of the recommended and original settings rather than using all of the suggestions as a package. The settings that can be changed are [Object Size](#), [Pointer Speed](#) and [Enhance Pointing Precision](#). Click the button next to the setting you wish to use for all of the options, then click the **Next** button to continue. The recommended and original values for each setting are shown. Using the recommended settings is the default option.

If you would prefer to select either the recommended or original settings as a group, click the [Basic Selection](#) button to view the groups of settings.

Click the [Learn More](#) button to get additional information on the settings that can be changed.



**Pointing Wizard by KPR**

### Select Your Settings

Choose the settings you want to use. Click Next to activate your choice.

**Pointer Speed:**

- 12 (recommended)
- 10 (original)

**Object Size:**

- Larger (recommended)
- Original

**Enhance Pointer Precision:**

- ON (recommended)
- OFF (original)

[Learn More](#) Click to learn more about these settings

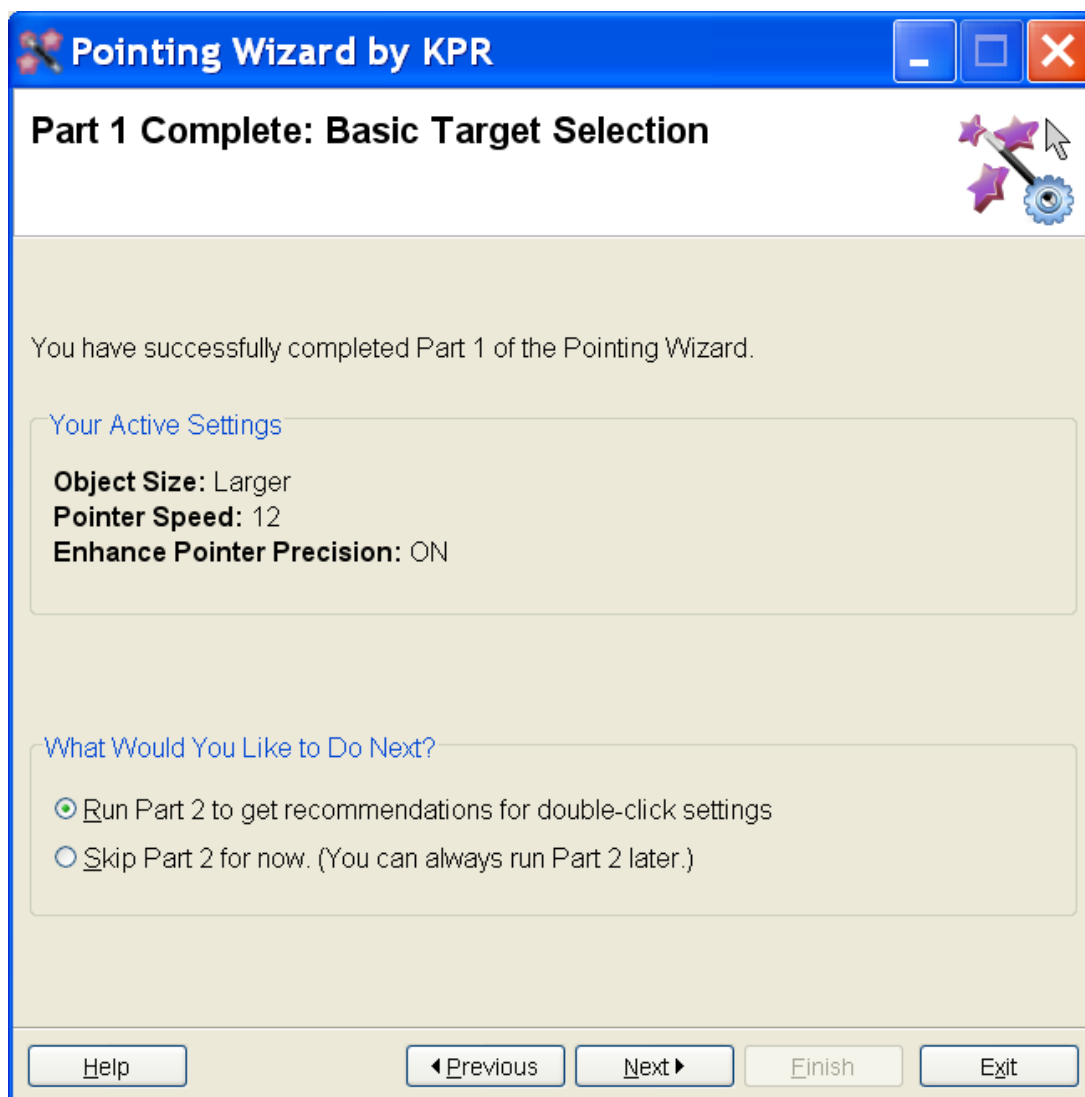
[Basic Selection](#) Click to select settings as a package

[Help](#) [◀ Previous](#) [Next ▶](#) [Finish](#) [Exit](#)

## Part 1 Complete: Basic Target Selection

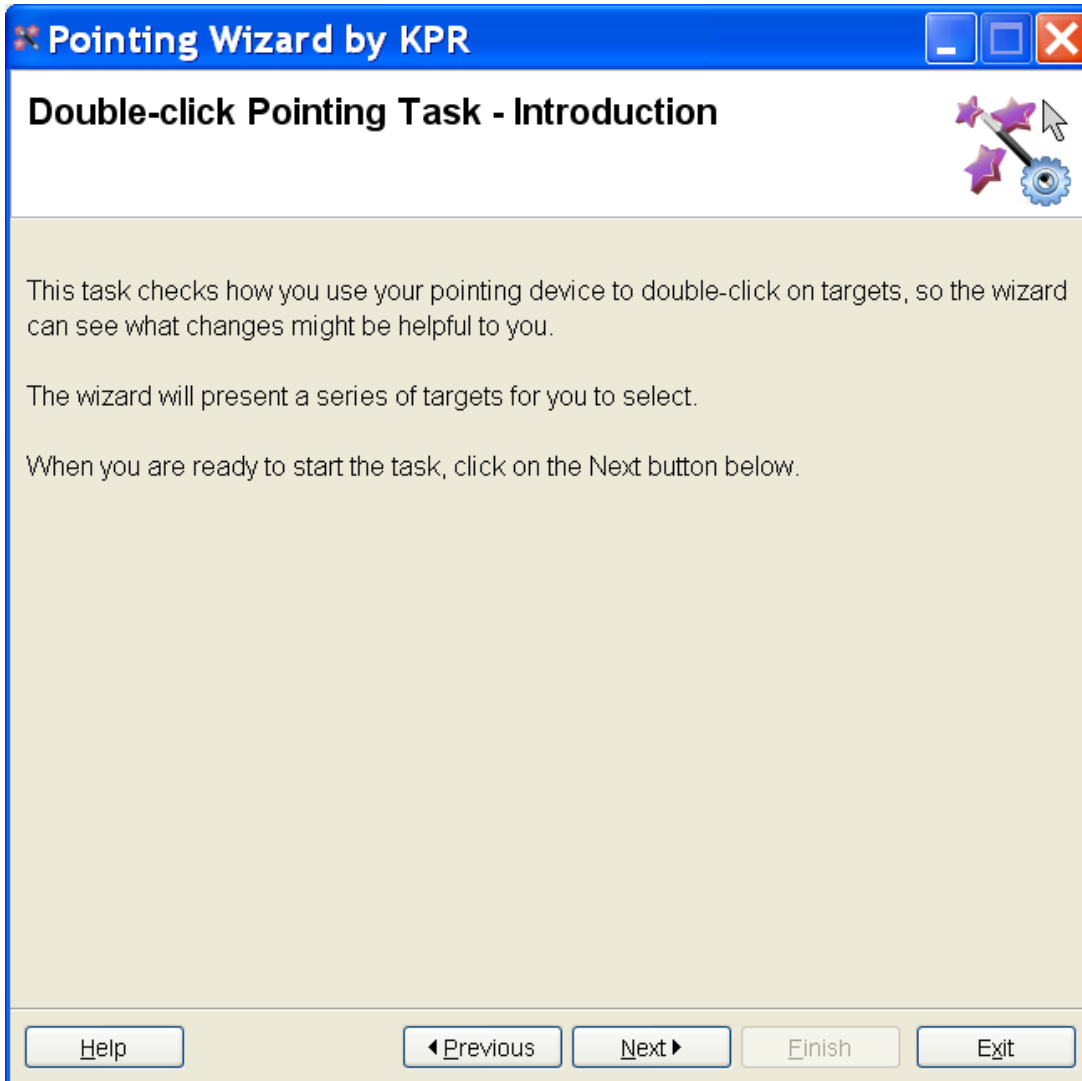
When you have completed Part 1 on Basic Target Selection, this screen appears, summarizing the outcome of Part 1 and asking whether you want to continue to Part 2.

Part 2 relates to double-click settings. You can select whether to do Part 2 or not.



## Double-click Pointing Task - Introduction

This screen provides an introduction and instructions for the first double-click pointing task. When you click **Next** on this screen, the double-click pointing task will begin.

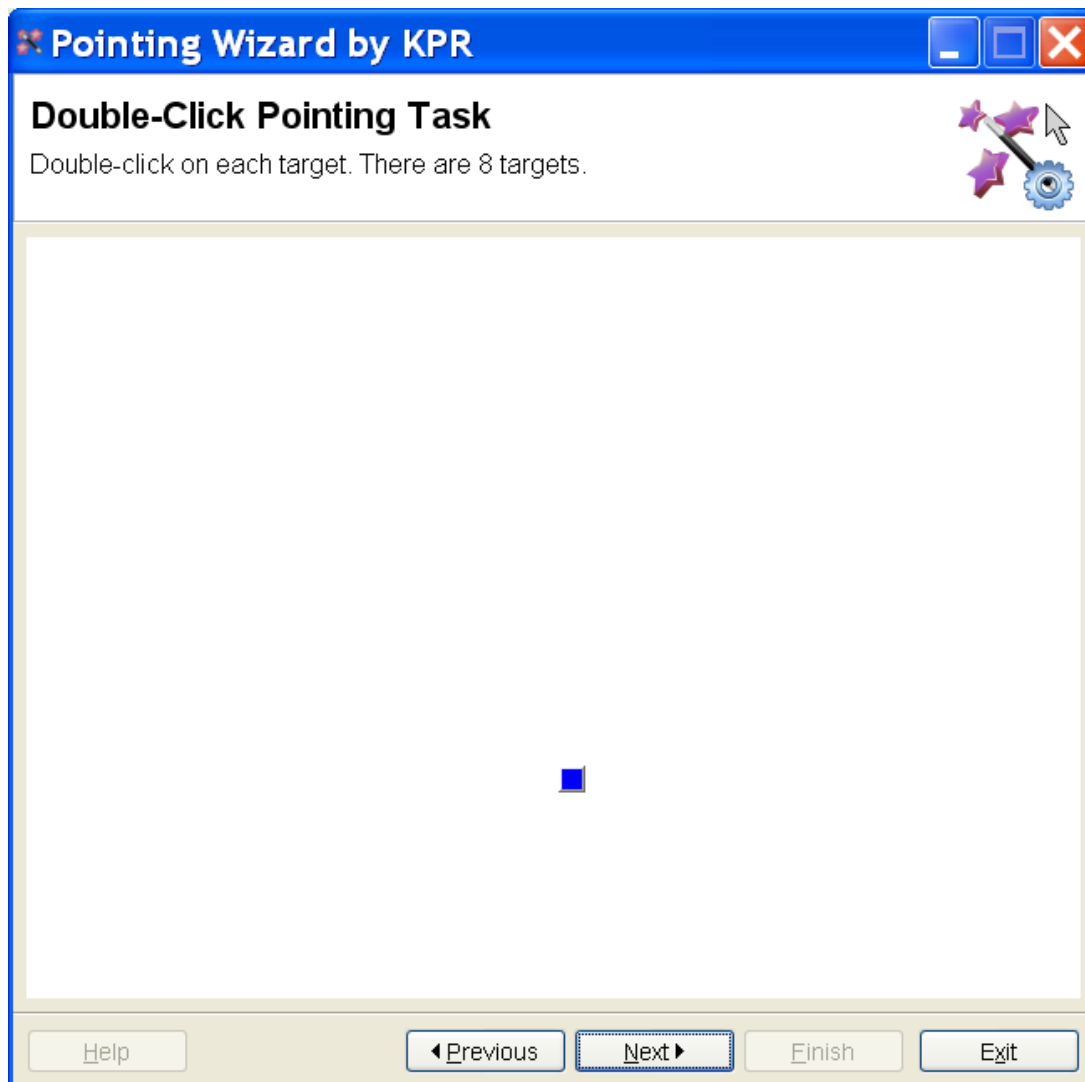


## Double-click Pointing Task

This is the screen for the first double-click pointing task. The Main Window displays a series of targets for you to select. Each target is a blue square, in one of two sizes. Move your mouse cursor into the square, and double-click on it to select. When you've successfully double-clicked on the target, it will disappear, and the next target will appear.

The task begins as soon as the first square appears. The task ends after 8 targets.

This task is timed to assist in gathering complete information about the effectiveness of your mouse settings. You have 30 seconds to acquire each target before the target disappears and the next target is presented. You should try to perform the task quickly and efficiently, but do not hurry or try to work at a speed that you cannot maintain over time.



## View Double-click Recommendations

This page opens when you have completed the first double-click pointing task. If the original settings are well matched with your pointing style, no changes will be suggested.

If the current mouse settings do not seem to be the most effective for your pointing style, new settings will be recommended. The current settings and the suggested changes will be displayed in the Main Window. You will have the opportunity to learn more about each setting by clicking the [Learn More](#) button. The settings that can be changed are the [Double-click Time](#) and the [Double-click Distance](#).

Click the **Next** button to continue to the next step where you can try out the suggested settings. The suggested mouse settings for your computer will be active at that point, but you must finish the wizard process to keep them active. You will have the opportunity to select the settings you wish to change later in the process. If you exit the wizard at this point, your original settings will be restored.



If you wish to retry the double-click task, click the **Previous** button. A pop-up window will open to confirm that you would like to restart the task. Clicking the **Yes – Start again with new targets** button will return you to the [Double-click Pointing Task](#) screen where you will be able to repeat the task. The data from the previous targets are not saved and will not be used to determine appropriate mouse settings. Clicking the **Cancel** button will return you to the View Double-click Recommendations screen.

## Practice with the Recommended Settings - double click

The Main Window of this page displays four buttons that you can click on to practice using the new settings. Practice is optional, but lets you get a feel for whether you like the recommended settings. You can practice as much as you like until you feel comfortable with the settings.

When you've successfully double-clicked on a button, it will turn into a smiley face. To get more practice, click the **Reset Practice** button to turn the smiles back into buttons.

When you are done practicing, you can perform a second double-click task to learn how your pointing speed and accuracy using the new settings compare with your results with the initial settings. Check the **Present a timed target task as my next step** box and then click the **Next** button to perform the comparison.

If you do not wish to compare results, click the **Next** button to continue on to select the settings you wish to use when you complete the Pointing Wizard.



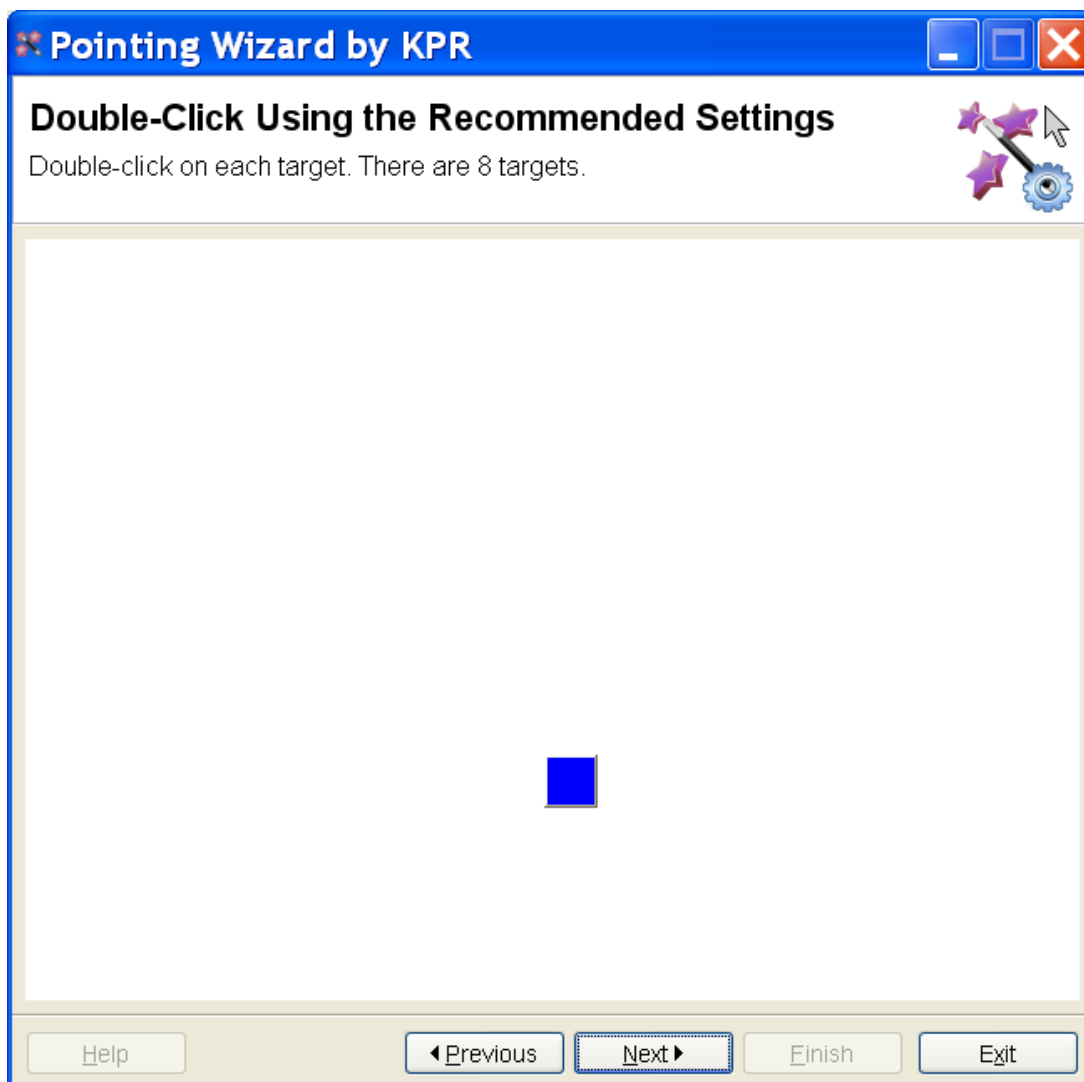
## Double-click Using the Recommended Settings

This is the screen for the second double-click pointing task. The purpose is to let you compare your performance using the recommended settings vs. your initial performance using your original settings. The task is the same as the one you completed previously in the [Double-click Pointing Task](#) screen.

The Main Window displays a series of targets for you to select. Each target is a blue square, in one of two sizes. Move your mouse cursor into the square, and double-click on it to select. When you've successfully double-clicked on the target, it will disappear, and the next target will appear.

The task begins as soon as the first target appears. After you've selected 8 targets, the task will end.

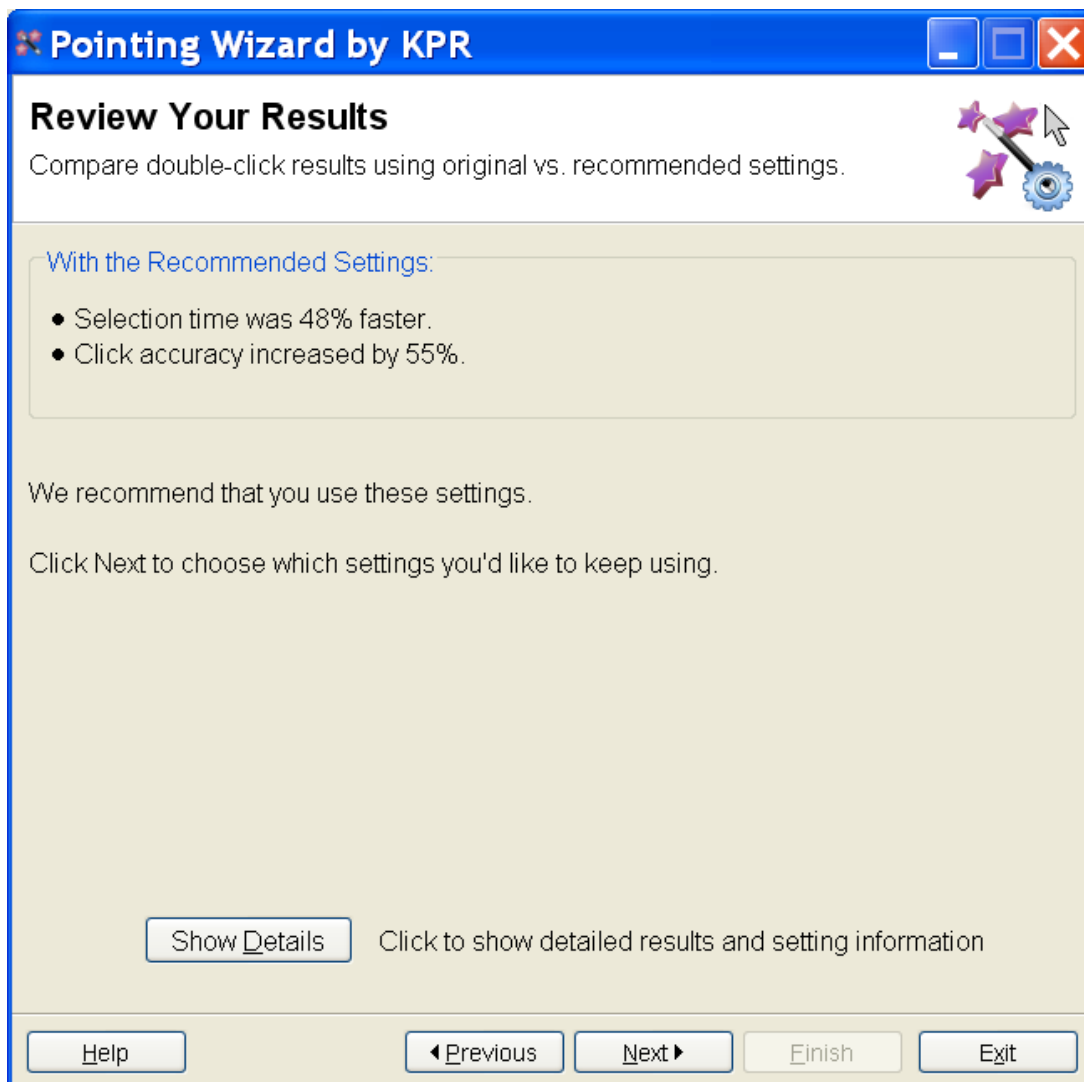
Note that doing the second timed double-click task is optional. This screen is only displayed if you checked the **Present a timed target task as my next step** box in the [Practice With Recommended Settings](#) screen before clicking the **Next** button.



## Review Your Results - double-click

If you complete two double-click tasks, one with original and one with recommended settings, this screen displays results and shows you the differences in speed and accuracy between the tasks. If both measurements show significant improvements, the recommendation will be to use the changes the wizard suggested.

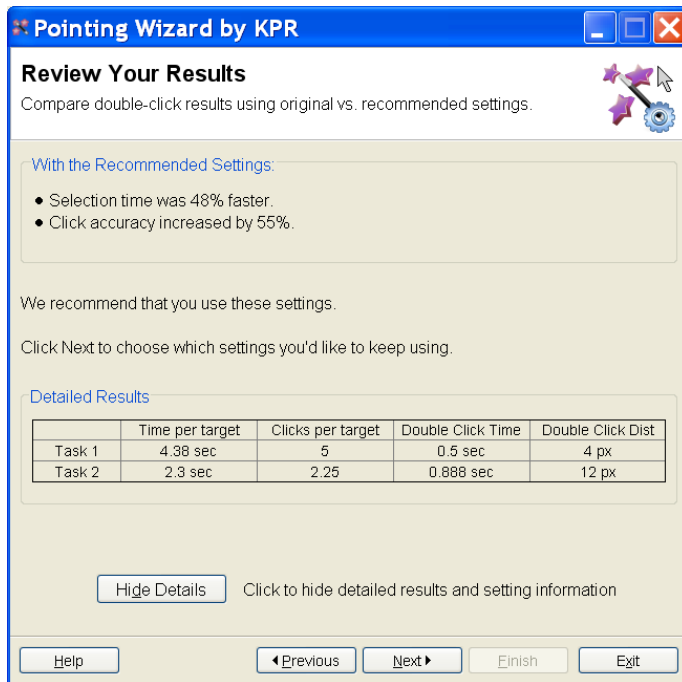
If the results do not show improvement in both speed and accuracy, there may not be a definite recommendation. You should consider using the suggested settings while doing your normal computer activities. This additional practice may improve your ability to use these settings and will give you a chance to see whether you like using them. After you have more experience with these settings, consider running the Pointing Wizard again to reevaluate how the settings match your abilities.



If your speed and accuracy decreased with the new settings, the recommendation will be to click the **Previous** button and get more practice using the new settings. If speed and accuracy do not improve after an additional task, you may want to return to your initial settings or accept the changes and practice using these settings while doing your normal computer activities. You should rerun the Pointing Wizard after you have more experience with these settings to reevaluate the best settings.

No matter what the wizard recommends, the final decision of what settings to use is up to you. When you click on the **Next** button, you will have the option to select some or all of the recommended settings before exiting the program.

If you would like to see more in-depth results from the two tests, click on the **Show Details** button. This will display a table with your speed and accuracy for each task, as well as the settings for each task. Speed is displayed in seconds, representing the average time to select each target. Clicks shows the average number of clicks you made to select each target; a lower number of clicks reflects better accuracy. To go back to the simplified results page, click on the **Hide Details** button.



The View Your Results screen is only displayed after completion of the double-click task in the [Double-click Using the Recommended Settings](#) screen. If you did not check the **Present a timed target task as my next step** box in the [Practice With Recommended Settings](#) screen, the wizard will move to the [Select Your Settings](#) screen without running a second double-click task or displaying the results of that task.

## Select Your Double-click Settings - Basic

You can choose to use the settings recommended by the Pointing Wizard or use the settings that were in place when you started the program. The values for each setting are listed below the two options. Click the button next to the option you wish to select, then click the **Next** button to continue. Using the full set of recommended settings is the default option.

You may also choose to use some combination of the recommended and original settings rather than using all of the suggestions as a package. Click the [Advanced Selection](#) button to select individual settings.

Click the [Learn More](#) button to get additional information on the settings that can be changed.



## Select Your Double-click Settings - Advanced

This screen allows you to use a combination of the recommended and original settings rather than using all of the suggestions as a package. The settings that can be changed are [Double-click Time](#), [Double-click Distance](#), and [Use Double Clicks](#). Click the button next to the setting you wish to use for all of the options, then click the **Next** button to continue. The recommended and original values for each setting are shown. Using the recommended settings is the default option.

If you would prefer to select either the recommended or original settings as a group, click the [Basic Selection](#) button to view the groups of settings.

Click the [Learn More](#) button to get additional information on the settings that can be changed.



The screenshot shows a Windows-style dialog box titled "Pointing Wizard by KPR". The main heading is "Select Your Double-click Settings" with a sub-instruction: "Choose the settings you want to use. Click Next to activate your choice." There are three radio button options: "Double Click Time" (0.888 sec recommended, 0.5 sec original), "Use Double Clicks" (Keep at Yes), and "Double Click Distance" (12 px recommended, 4 px original). At the bottom, there are buttons for "Learn More", "Basic Selection", "Help", "Previous", "Next", "Finish", and "Exit".

**Pointing Wizard by KPR**

**Select Your Double-click Settings**

Choose the settings you want to use. Click Next to activate your choice.

**Double Click Time:**

- 0.888 sec (recommended)
- 0.5 sec (original)

**Use Double Clicks:**

Keep at Yes

**Double Click Distance:**

- 12 px (recommended)
- 4 px (original)

[Learn More](#) Click to learn more about these settings

[Basic Selection](#) Click to select settings as a package

[Help](#) [◀ Previous](#) [Next ▶](#) [Finish](#) [Exit](#)

## Part 2 Complete: Double-Click Target Selection

When you have completed Part 2 on Double-Click Target Selection, this screen appears, summarizing the outcome of Part 2.

Click **Next** to go to the [final screen](#) and see a summary of your entire Pointing Wizard session.



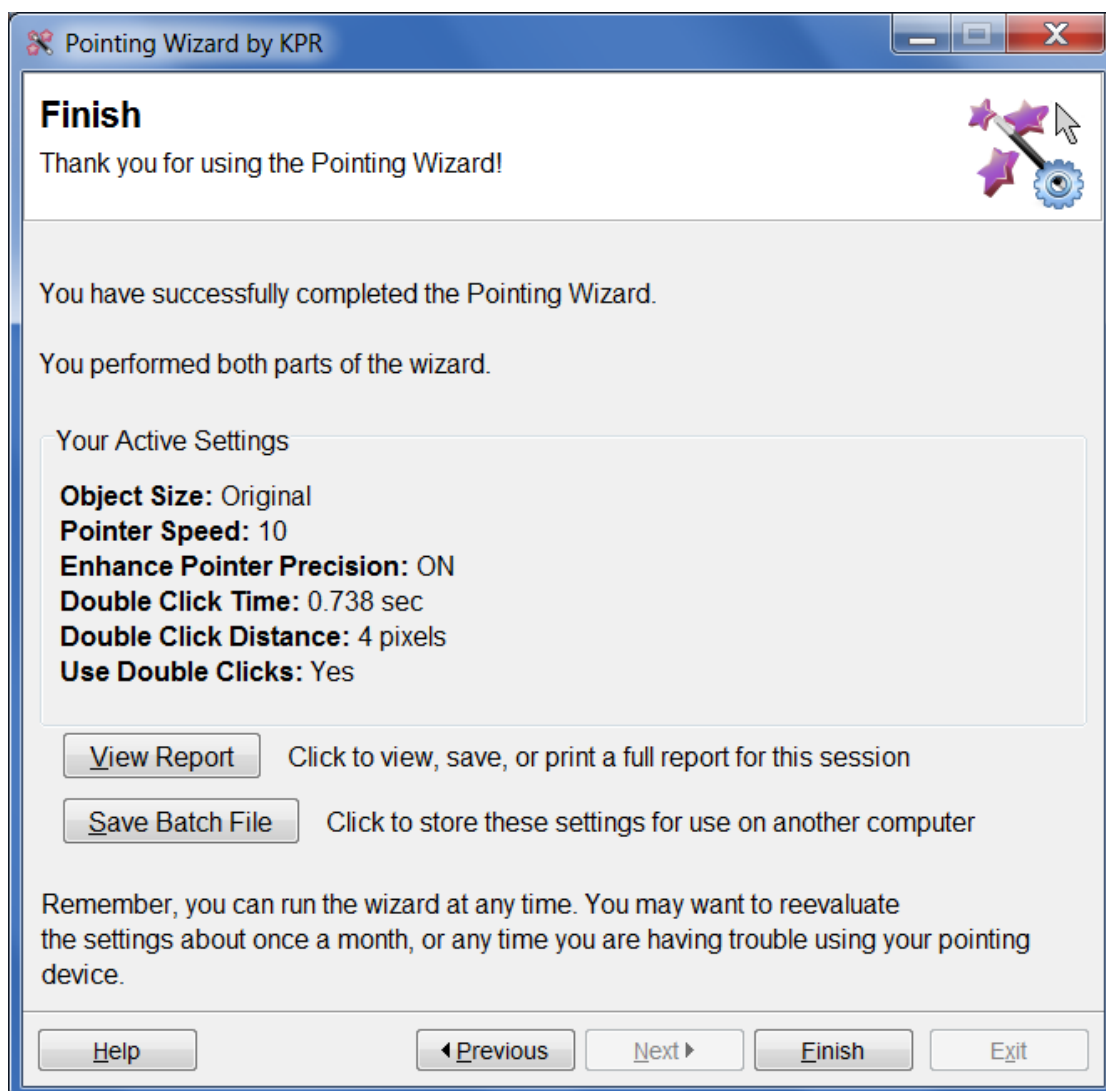
## Finish

The Finish screen is the last active step in the wizard. It displays the settings that will be used when you click **Finish** to indicate you have completed the wizard process and wish to close the program. If you do not want to use the settings shown, you may click the **Previous** button twice to return to the [Select Your Settings](#) screen where you can make the changes.

You also have the option of viewing, saving, and/or printing a full report of your session by clicking the [View Report](#) button.

You can also store the active settings in a batch file for use on another computer by clicking the [Save Batch File](#) button.

You can repeat the Pointing Wizard at any time. We recommend checking your mouse settings about once a month or any time you have difficulties using your pointing device.

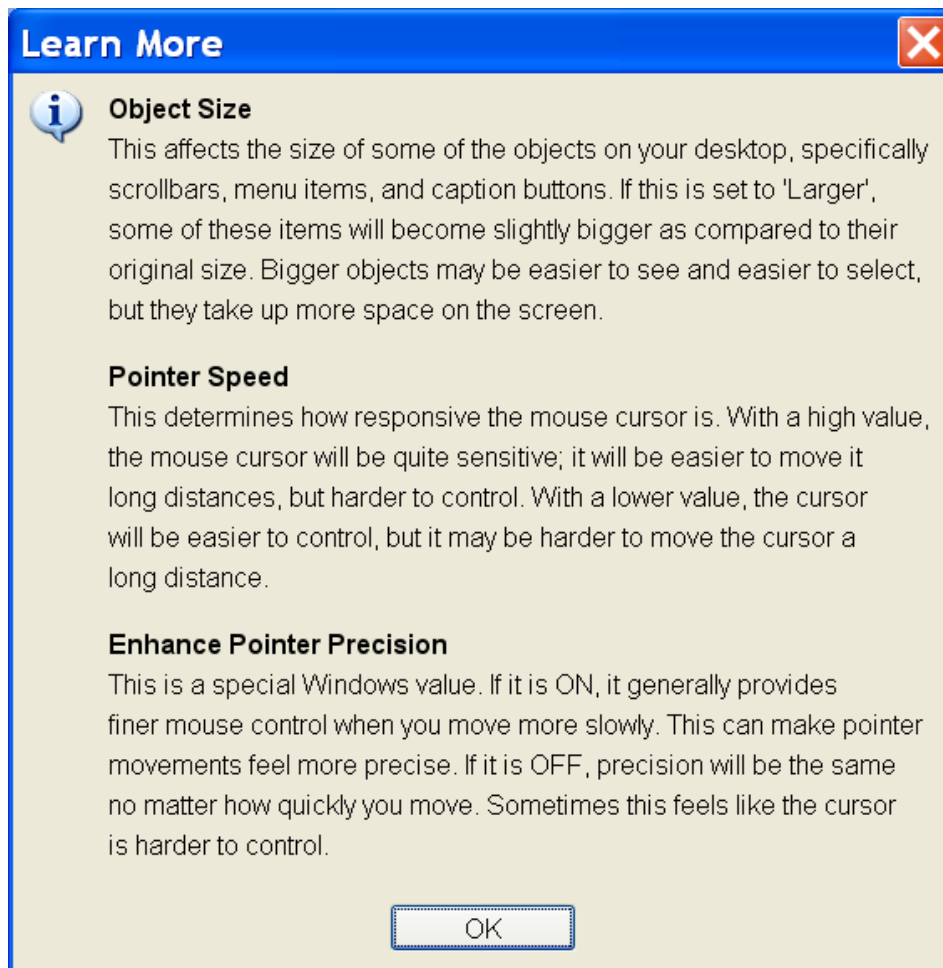


## Learn More Pop-Ups

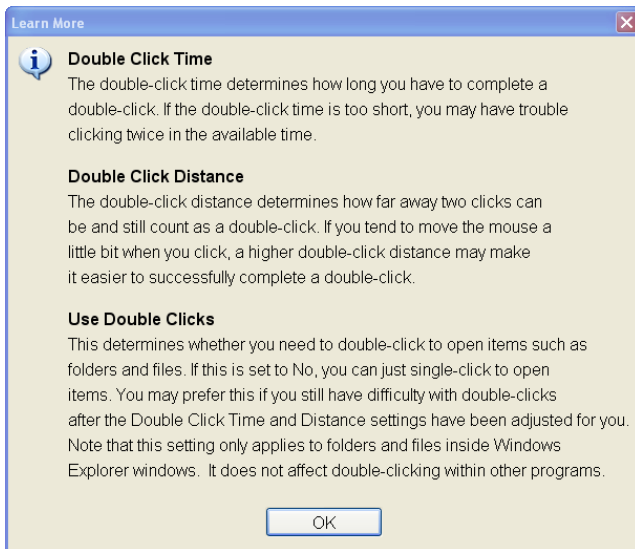
There are two Learn More Pop-up dialogs, one for Part 1 and one for Part 2 of the wizard. The **Learn More** button on the [View Recommendations](#) or [Select Your Settings](#) screens brings up this dialog. It provides basic information about the mouse settings that can be changed by the wizard. You can learn more by closing this window and then clicking on the **Help** button. Click the **Close** button to close the window and return to the screen where you started.

More detailed information about the mouse settings adjusted by Pointing Wizard can be found in the following Help pages: [Object Size](#), [Pointer Speed](#), [Enhance Pointer Precision](#), [Double-click Time](#), [Double-click Distance](#), [Use Double Clicks](#).

The Learn More dialog for Part 1 settings:



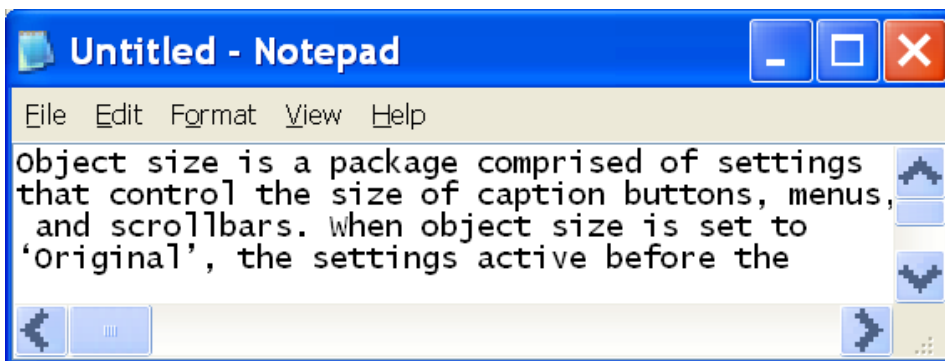
The Learn More dialog for Part 2 settings:



## Object Size

Object Size is a package comprised of settings that control the size of caption buttons, menus, and scrollbars. When Object Size is set to 'Original', the settings active before the Wizard launched remain active. When Object Size is set to 'Larger', the items in the package will become slightly bigger as compared to their original size. Bigger objects may be easier to see and select but they also take up more space on the screen.

Example of 'Larger' package:



The Pointing Wizard will make a change to your Object Size if it thinks that will improve your pointing performance AND if you agree to the change.

If you need to adjust any object sizes individually, you can do this with Windows control panels. In Windows XP, sizes of the items included in the package can be set individually using the **Display Control Panel Advanced Appearance** dialog. In Vista and Windows 7, use the **Appearance and Personalization Control Panel**, then go into **Window Color Advanced Appearance**. Just be aware that this is fairly cumbersome and time-consuming (which is one reason we developed this Pointing Wizard!).

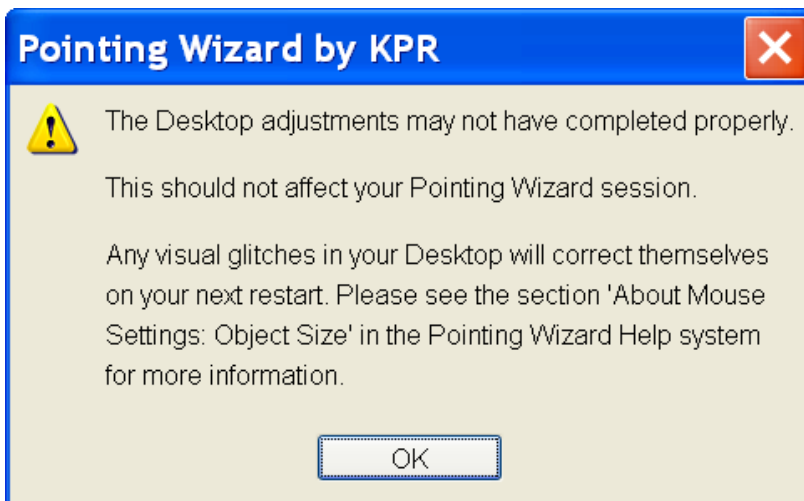
The object sizes in the Pointing Wizard package are controlled by the following Windows registry entries in HKEY\_CURRENT\_USER\Control Panel\Desktop\WindowMetrics: CaptionHeight, CaptionWidth, MenuHeight, MenuWidth, ScrollHeight, and ScrollWidth.

### When the Wizard Changes Object Size

When the Pointing Wizard is about to change Object Size, the following popup will be displayed:



After the user acknowledges the popup, the Wizard will update the Windows registry entries that control Object Size. If the Wizard detects a potential problem related to adjusting the Windows registry entries, the following popup will be displayed:

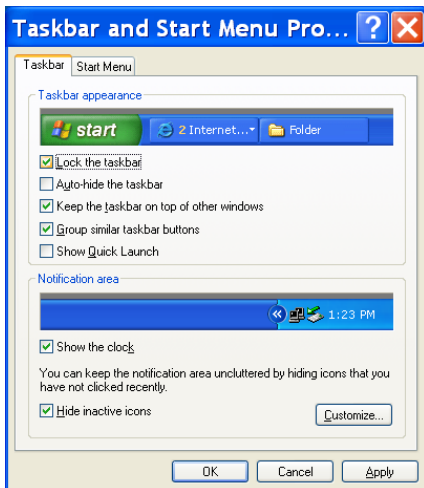


Minimizing open windows to the taskbar and restoring will force each window to refresh itself and may resolve any visual glitches within open application windows.

Occasionally, the Windows taskbar does not fully adjust to changes in Object Size. While the taskbar is fully functional, the size of icons may not match the height of the taskbar. The taskbar may appear similar to either of the following:



Changing the state of the 'Lock the Taskbar' property will often force the taskbar to refresh itself, thereby correcting the problem. To change the state of the 'Lock the Taskbar' property, **right click** on the taskbar and select **Lock the Taskbar**. Another option is to **right click** on the taskbar and select **Properties** to open the **Taskbar and Start Menu Properties** dialog. On the **Taskbar** tab, toggle the state of the **Lock the Taskbar** checkbox. Click **Apply** followed by **OK**.



Repeat the process to return the taskbar lock to its original state. If this does not resolve the issue, rebooting the machine is a guaranteed way of forcing the taskbar to accommodate a change in Object Size.

## Pointer Speed

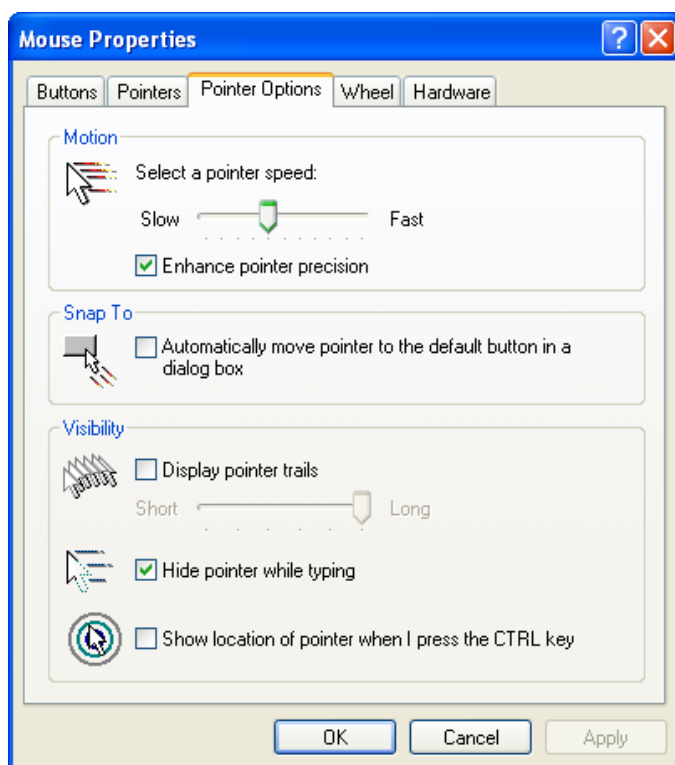
Pointer Speed is a setting built into the Windows operating system. It lets you control how responsive the mouse cursor is. Pointer Speed ranges from 1 to 20, with a default of 10.

With a high Pointer Speed, the mouse will feel more sensitive; it will be easier to move it long distances, but it will be harder to control. With a lower Pointer Speed, the cursor will be easier to control, but it may be harder to move it long distances.

The Pointing Wizard will make a change to your Pointer Speed if it thinks that will improve your pointing performance AND if you agree to the change.

If you ever want to adjust the Pointer Speed yourself, you can do that with the Windows Control Panel. On Windows XP, open the **Mouse Control Panel**. On Windows Vista, open the Control Panel, then click **Hardware**, then **Mouse** to get the XP-style Mouse Control Panel. On Windows 7, to get the XP-style Mouse Control Panel, first open the Control Panel, then click in the **Search Control Panel** field (located in the upper right corner) and type 'mouse'. Click **Change mouse settings**, and the XP-style Mouse Control Panel will appear.

Mouse Control Panel:



Once you have the Mouse Control Panel, click the **Pointer Options** tab. Adjust the Pointer Speed by moving the slider control to the right (higher) or left (lower). Click **OK**, and the new Pointer Speed will take effect.

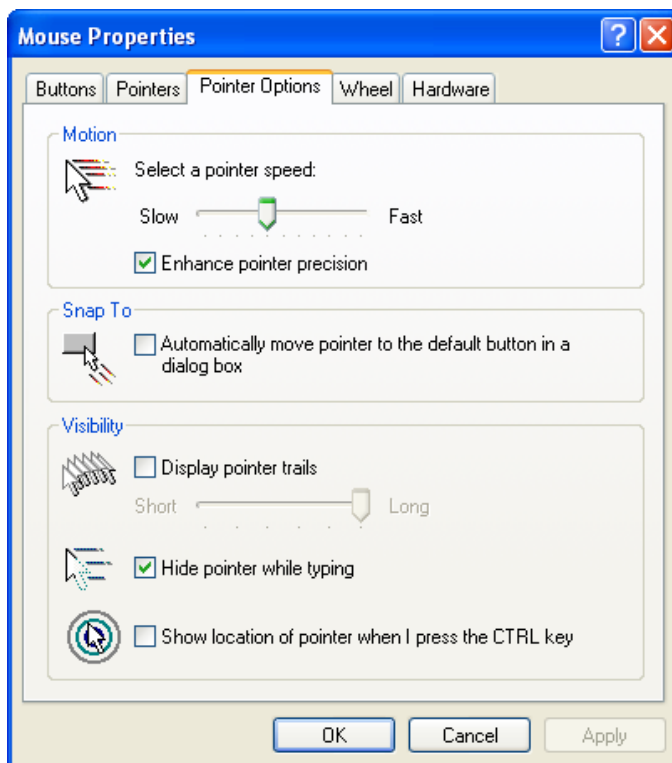
## Enhance Pointer Precision

Enhance Pointer Precision (EPP) is a setting built into the Windows operating system. If EPP is ON, it provides finer cursor control when you move the mouse more slowly. This can make pointing movements feel more precise. If EPP is OFF, precision will be the same no matter how fast you move.

The Pointing Wizard will always recommend that Enhance Pointer Precision be turned ON. Our research data shows that this setting benefits just about everybody.

If you ever want to adjust EPP yourself, you can do that with the Windows Control Panel. On Windows XP, open the **Mouse Control Panel**. On Windows Vista, open the Control Panel, then click **Hardware**, then **Mouse** to get the XP-style Mouse Control Panel. On Windows 7, to get the XP-style Mouse Control Panel, first open the Control Panel, then click in the **Search Control Panel** field (located in the upper right corner) and type 'mouse'. Click **Change mouse settings**, and the XP-style Mouse Control Panel will appear.

Mouse Control Panel:



Once you have the Mouse Control Panel, click the **Pointer Options** tab. Then click the checkbox for **Enhance pointer precision** (ON = checked; OFF = unchecked). Click **OK**, and the new setting will take effect.

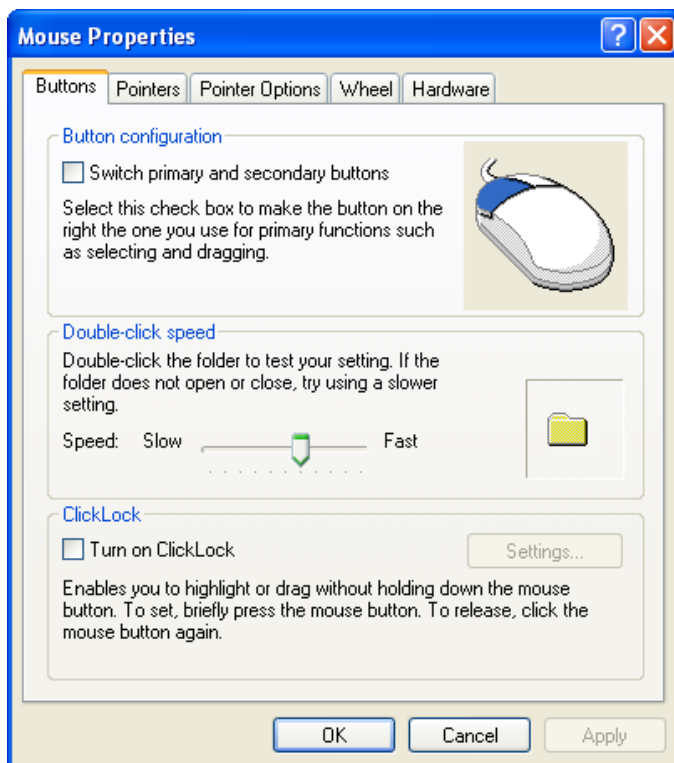
## Double-click Time

Double-click Time is a setting that is built into the Windows operating system. It determines how long you have to complete a double-click. Both clicks for a double-click must occur within the Double-click Time for it to "count" as a double-click. If Double-click Time is too short, you may have trouble completing a double-click in the available time. The default value in Windows is 0.5 seconds.

The Pointing Wizard will make a change to your Double-click Time if it thinks that will improve your pointing performance AND if you agree to the change.

If you ever want to adjust the Double-click Time yourself, you can do that with the Windows Control Panel. On Windows XP, open the **Mouse Control Panel**. On Windows Vista, open the Control Panel, then click **Hardware**, then **Mouse** to get the XP-style Mouse Control Panel. On Windows 7, to get the XP-style Mouse Control Panel, first open the Control Panel, then click in the **Search Control Panel** field (located in the upper right corner) and type 'mouse'. Click **Change mouse settings**, and the XP-style Mouse Control Panel will appear.

Mouse Control Panel:



Once you have the Mouse Control Panel, click the **Buttons** tab. Adjust the Double-click Time by moving the slider control to the right (faster) or left (slower). The slowest setting available is 0.9 sec, but Pointing Wizard can set it slower than that when necessary. Click **OK**, and the new Double-click Time will take effect.

## Double-click Distance

Double-click Distance is a setting that is built into the Windows operating system. It determines how far apart two clicks can be and still "count" as a double-click. The default value in Windows is 4 pixels. This means that two clicks must fit in a 4x4 pixel square in order to count as a double-click. A higher value gives you more "wiggle-room" when making double-clicks.

The Pointing Wizard will make a change to your Double-click Distance if it thinks that will improve your pointing performance AND if you agree to the change.

The Windows Control Panel does not allow you to adjust the Double-click Distance yourself.

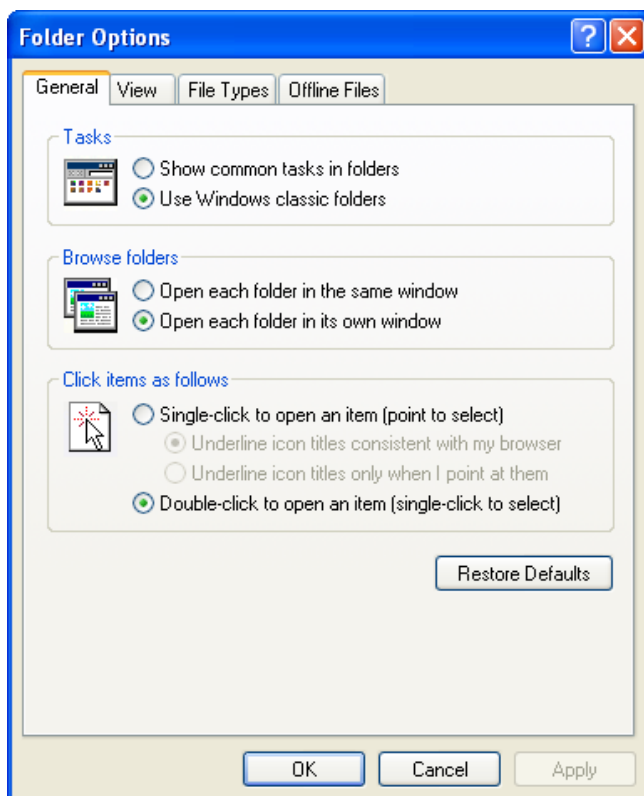
## Use Double Clicks

This is a setting within Windows Explorer that determines whether you open files and folders with double-clicks. By default, you use double-clicks. If Use Double-clicks is set to OFF, you can open a file or folder with just a single-click. You may prefer this if you still have trouble double-clicking even after the [Double-click Time](#) and [Double-click Distance](#) are adjusted for you.

Note that this setting only applies within Windows Explorer. It does not affect single- and double-clicking in other applications.

If you want to adjust this setting yourself, you can do that with the Windows Control Panel. In Windows XP, open the Folder Options Control Panel. In Windows Vista/7, open the Control Panel, then click **Appearance and Personalization**, then **Folder Options** to get the XP-style Folder Options Control Panel.

Folder Options Control Panel:



Once you have the Folder Options Control Panel, click the **General** tab. Select whether you want Single-click or Double-click to open an item. Click **OK**, and the new setting will take effect.

## How the Wizard Does It

If you are curious about how the Pointing Wizard comes up with its recommendations, this page tries to provide an overview.

Part 1 on basic target selection makes recommendations for [Object Size](#), [Pointer Speed](#) and [Enhance Pointer Precision](#), the wizard observes your pointing during the [first basic target selection task](#), and bases its recommendations on that. Note that any targets you select after the first basic target task, whether on the [practice screen](#) or for the optional [second timed task](#), are not used to make recommendations for you.

For [Object Size](#), the wizard compares your performance for smaller targets with your performance for larger targets. If your performance was significantly better for the larger targets, the wizard recommends using larger object sizes.

For [Pointer Speed](#), the wizard changes the pointer speed for every set of 8 targets, then recommends the pointer speed that gave you the best performance.

It starts by looking at the first 8 targets you selected. Based on that, the wizard adjusts the pointer speed up or down for the next set of 8 targets. From then on, it looks at whether the new pointer speed gave you better performance than the previous one. If so, it continues to adjust the pointer speed in the same direction. If not, it reverses direction and tries another new pointer speed. So, with each set of 8 targets, you'll be using a different pointer speed, and the recommended one will be the one that gave you the best performance.

For [Enhance Pointer Precision](#), our research has demonstrated that turning this on benefits just about everyone. So the wizard always recommends turning Enhance Pointer Precision on.

Part 2 on double-click target selection makes recommendations for [Double-click Time](#), [Double-click Distance](#), and [Use Double Clicks](#). The wizard observes your pointing during the [first double-click task](#), and bases its recommendations on that. Note that any targets you select after the first double-click task, whether on the [practice screen](#) or for the optional [second timed task](#), are not used to make recommendations for you.

During the double-click task, the wizard measures the amount of time between clicks for each of your double-clicks. It then recommends an appropriate [Double-click Time](#) based on the average and standard deviation of these time measurements.

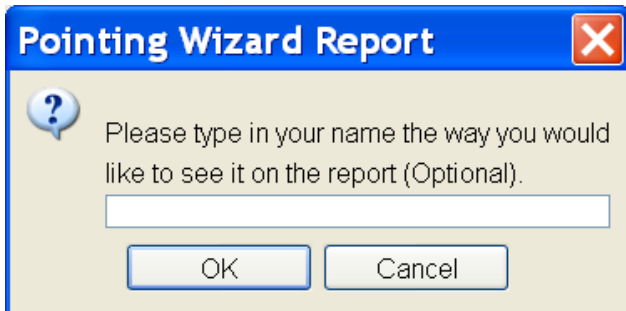
Similarly, the wizard also measures the physical distance between clicks for each of your double-clicks. It then recommends an appropriate [Double-click Distance](#) based on the average and standard deviation of these distance measurements.

For [Use Double-Clicks](#), the wizard recommends using double-clicks unless you have problems with double-clicking that may not be fixed by changes in Double-click Time and Double-click Distance. Specifically, if the recommended Double-click Time and Double-click Distance exceed certain levels, the wizard will recommend using single-click instead of double-click to open files and folders.

## View Report

You may view, save, and/or print a full report of your session by clicking the **View Report** button on the [Finish](#) screen.

Once you click **View Report**, a pop-up window will appear and you will be prompted to type a name as you would like it to be displayed in the report. The name you enter will appear on the report as the Pointing Wizard User. Entering a name is optional and you can use any format you wish.



Click the **OK** button to view the report. Click the **Cancel** button to return to the previous screen.

## Report Overview

The Pointing Wizard Report provides a record of a single wizard session. The header of the report shows the date of the session, the Windows user account that was active, and the name you entered (if any) when opening the report. The report is organized into ten sections:

1. [Summary](#)
2. [Original Settings](#)
3. [Results of Basic Target Selection Task](#)
4. [Recommended Settings for Basic Target Selection](#)
5. [Results of Second Basic Target Selection Task](#)
6. [Results of Double-click Task](#)
7. [Recommended Settings for Double-click Task](#)
8. [Results of Second Double-click Task](#)
9. [Final Settings](#)
10. [Description of Pointing Device Settings](#)

Depending on what occurred during the Pointing Wizard, some sections of the report may not be filled in. For example, if you skip Part 2 of the wizard, there will be no information in any section related to double-click settings.

You can navigate through the pages of the report by clicking on the **Previous** and **Next** buttons. The text between the buttons shows the current page and the total number of pages in the report.

The wizard does not automatically save a copy of the report. Clicking the **Save** button will bring up a window that allows you to assign a file name and location for the report. Reports are saved in Rich Text Format (RTF). This type of file can be opened and edited using most word processors, if desired.

Click the **Print** button to bring up a print dialog box with basic settings for printers that are installed on your system.

Click the **Close** button to exit the report and return to the wizard. If you have not already done so, you will be asked if you wish to save the report before it closes.

## Report - Summary Section

The summary section of the report shows the Windows mouse settings and how they have changed during the Pointing Wizard session. The settings are shown for three points in the wizard session: at the start of the session, the recommended settings, and the final settings. Additional details about the settings at each point in the session are displayed later in the report.

Setting	Original	Recommended	Final
Object Size	Original	Larger	Larger
Pointer Speed	10	12	12
Enhance Pointer Precision	OFF	ON	ON
Double Click Time	0.5 sec	0.752 sec	0.752 sec
Double Click Height	4 pixels	10 pixels	10 pixels
Double Click Width	4 pixels	10 pixels	10 pixels
Use Double Clicks	Yes	Yes	Yes

This example table shows a session in which the mouse settings were originally set to the Windows default values.

The 'Recommended' column in the example table shows what the wizard recommended in this session. It recommended using the larger [Object Size](#) package. It recommended a slightly higher [Pointer Speed](#), to increase the sensitivity of the mouse. It suggested turning [Enhance Pointer Precision](#) ON, to make it easier to control the mouse cursor. For double-clicking, it recommended expanding the [Double-click Time](#) and [Double-click Distance](#), to make it easier to double-click on objects.

The 'Final' column shows that the user decided to use the wizard's recommendations.

## Report - Original Settings

In this section, the Windows mouse settings that were active at the start of the wizard are displayed in a table. This may be useful when comparing results or if you wish to return to these settings.

Original Settings	
Object Size	Original
Pointer Speed	10
Enhance Pointer Precision	OFF
Double Click Time	0.5 sec
Double Click Height	4 pixels
Double Click Width	4 pixels
Use Double Clicks	Yes

This example table shows a session in which the mouse settings were originally set to the Windows default values.

## Report - Results of First Basic Target Selection Task

This section of the report shows two tables containing the settings and results for the first basic target selection task. The settings in this table are the same as those shown in the [Original Settings](#).

The results table shows the average time it took to select each target, in seconds. It also shows the average number of clicks made per target. Fewer clicks reflects better accuracy in completing the task.

Settings for First Basic Target Task	
Object Size	Original
Pointer Speed	10
Enhance Pointer Precision	OFF

Results for First Basic Target Task	
Time per target	1.62 sec
Clicks per target	1.4

## Report - Recommended Settings for Basic Target Selection

The mouse settings that were recommended by the Pointing Wizard after the first basic target task are displayed in a table.

Recommended Settings	
Object Size	Larger
Pointer Speed	12
Enhance Pointer Precision	ON

This example table shows a session in which the wizard recommended a larger [Object Size](#) package, a [Pointer Speed](#) of 12 and turning [Enhance Pointer Precision](#) ON.

## Report - Results of Second Basic Target Selection Task

This section of the report shows two tables containing the settings and results for the second basic target selection task. The settings used for this task and shown in this table are the same as those in the [Recommended Settings](#) section.

The results table shows the average time it took to select each target, in seconds. It also shows the average number of clicks made per target. Fewer clicks reflects better accuracy in completing the task.

Settings for Second Basic Target Task	
Object Size	Larger
Pointer Speed	12
Enhance Pointer Precision	ON

	Results for Second Task	Change relative to First Task
Time per target	1.08 sec	32.97% faster
Clicks per target	1	27.27% fewer

Note that if a second basic target task wasn't completed, these tables won't appear in the report. You control whether a second timed task is presented by checking the box on the [Practice with the Recommended Settings](#) screen.

## Report - Results of Double-click Task

This section of the report shows two tables containing the settings and results for the first double-click task. The settings in this table are the same as those shown in the [Original Settings](#).

The results table shows the average time it took to select each target, in seconds. It also shows the average number of clicks made per target. Fewer clicks reflects better accuracy in completing the task.

Settings for First Double-Click Task	
Double Click Time	0.5 sec
Double Click Height	4 pixels
Double Click Width	4 pixels
Use Double Clicks	Yes

Results for First Double-Click Task	
Time per target	4.02 sec
Clicks per target	4.8

## Report - Recommended Settings for Double-click

The mouse settings that were recommended by the Pointing Wizard after the first double-click task are displayed in a table.

Recommended Settings	
Double Click Time	0.752 sec
Double Click Height	10 pixels
Double Click Width	10 pixels
Use Double Clicks	Yes

This example table shows a session in which the wizard recommended a [Double-click Time](#) of 0.752 seconds, a [Double-click Distance](#) of 10 pixels, and the [use of double-clicks](#). Note that Height and Width are specified separately, since that is how Windows does it internally. They will always have the same value, however. A distance of 10 pixels means that two clicks must fit in a 10x10 pixel square in order to "count" as a double-click.

## Report - Results of Second Double-click Task

This section of the report shows two tables containing the settings and results for the second double-click task. The settings used for this task and shown in this table are the same as those in the [Recommended Settings](#) section.

The results table shows the average time it took to select each target, in seconds. It also shows the average number of clicks made per target. Fewer clicks reflects better accuracy in completing the task.

Settings for Second Double-Click Task	
Double Click Time	0.752 sec
Double Click Height	10 pixels
Double Click Width	10 pixels
Use Double Clicks	Yes

	Results for Second Task	Change relative to First Task
Time per target	1.88 sec	53.18% faster
Clicks per target	2.1	55.26% fewer

Note that if a second double-click task wasn't completed, these tables won't appear in the report. You control whether a second timed task is presented by checking the box on the [Practice with the Recommended Settings](#) screen.

## Report - Final Settings

The Windows mouse settings that were active at the end of this Pointing Wizard session are displayed in a table. This information may be useful in order to use these settings on another computer.

Setting	Final
Object Size	Larger
Pointer Speed	12
Enhance Pointer Precision	ON
Double Click Time	0.752 sec
Double Click Height	10 pixels
Double Click Width	10 pixels
Use Double Clicks	Yes

## **Report - Description of Settings**

This section of the report describes the Windows pointing device settings that are currently supported by Pointing Wizard. The behavior of each setting is provided, along with information about how it can be manually adjusted within Windows, where possible. (While Pointing Wizard makes these adjustments automatically, there may be times when manual adjustment is useful.)

## Batch File Overview

There may be times when you want to take the settings provided by Pointing Wizard and move them to a different computer. For example, if you run Pointing Wizard on your home computer, you may want an easy way to bring the new settings in to your office computer. Or in a school setting, you may not always know what computer you are going to use. Pointing Wizard's batch file feature lets you package up your settings and load them onto a different computer.

Pointing Wizard uses Windows batch files to package up your settings. You save a batch file, then copy it to the new computer, and run the batch file to activate the settings on the new computer. See [Save Batch File](#) and [Using Batch Files](#) for more details.

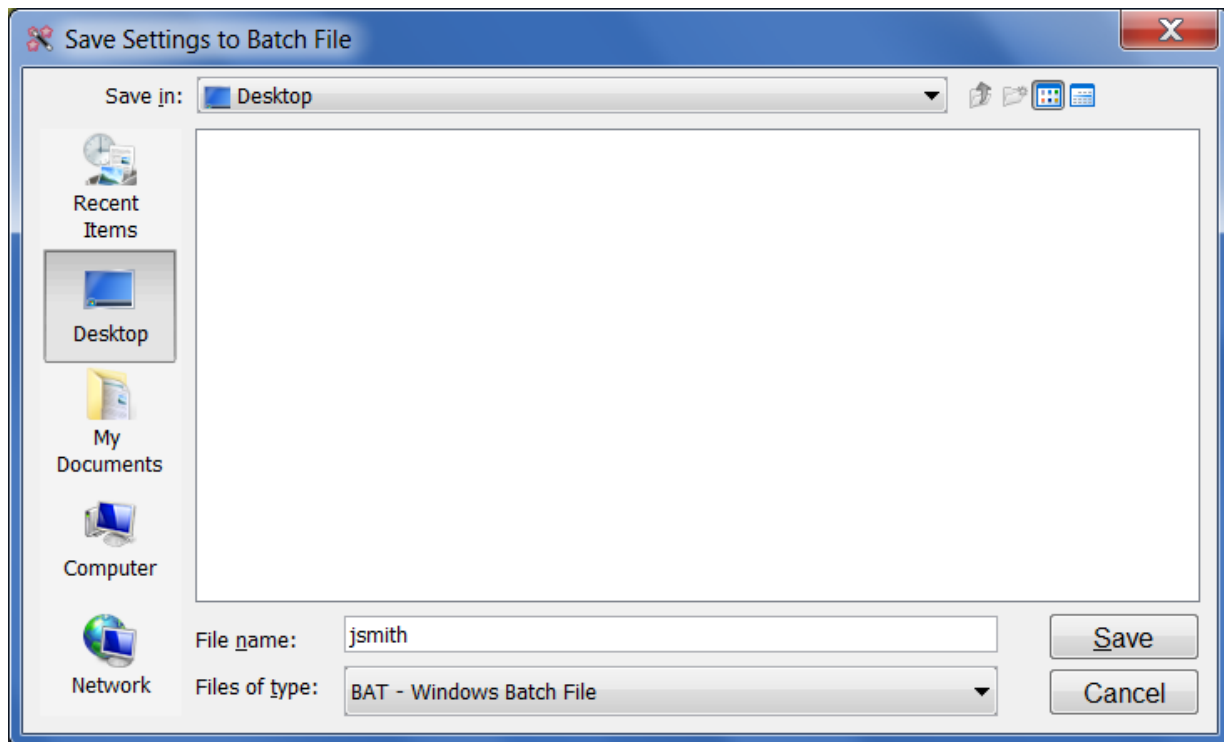
When you save a batch file containing the settings provided by Pointing Wizard, the wizard automatically writes *Windows-default-ptwiz.bat* to the same location. *Windows-default-ptwiz.bat* can be used to set mouse settings back to their Windows default values. This can be useful if you share the computer with another person.

Refer to [Batch File Content](#) for details concerning the registry entries that are modified by the batch file.

## Save Batch File

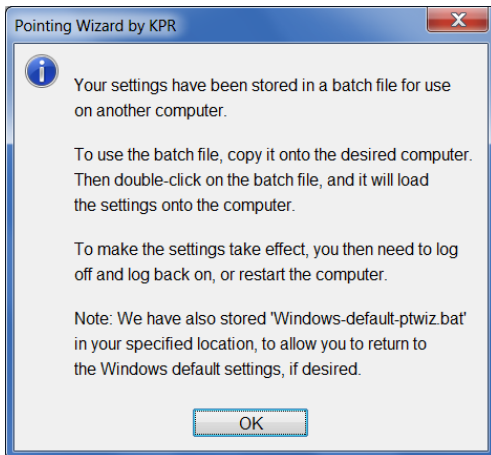
You may store the active settings to a batch file for use on another computer by clicking the **Save Batch File** button. This button is on the [Finish](#) screen.

Clicking the **Save Batch File** button brings up a window that allows you to assign a file name and location for the batch file.



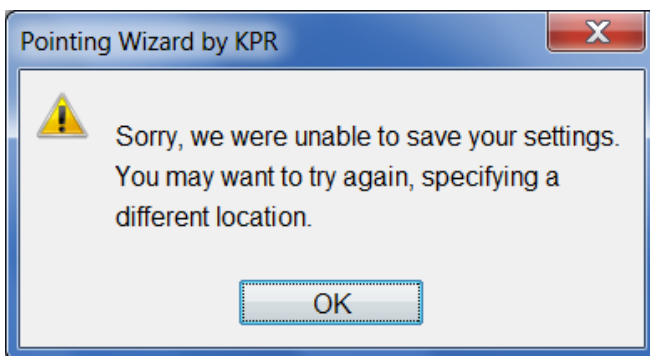
When you click **Save**, the wizard writes the active settings to the file and location that you specified. The wizard also writes *Windows-default-ptwiz.bat* to the specified location, which can be used to restore the mouse settings to their Windows default values.

When the wizard has successfully completed saving the batch files, the following window is displayed.



Refer to [Using Batch Files](#) for instructions on how to execute the stored batch files.

In the event that the settings cannot be written to the specified file name / location, the wizard displays the following window.



If you see this message, a likely cause is that you do not have permission to write to the specified location. We suggest that you try to save the settings again, at a different location.



## Batch File Content

Batch files write to the same registry settings that Pointing Wizard changes. In this way, batch files allow you to activate settings recommended by the wizard on computers that do not have Pointing Wizard installed. These registry settings control [Object Size](#), [Pointer Speed](#), [Enhance Pointer Precision](#), [Double Click Time](#), [Double Click Distance](#) and [Use Double Clicks](#).

If you are interested in the details, the following table shows the specific registry settings included in the batch files along with their Windows default values. The file created when you [save your settings to a batch file](#) writes your current settings into the registry keys listed in the table. Saving a batch file also automatically creates *Windows-default-ptwiz.bat*, which activates the Windows default settings, using the default values shown in the table for Windows 7 and slightly different object size settings for Windows XP.

Key	Name	Default Value
HKCU\Control Panel\Desktop\WindowMetrics	CaptionHeight	-315
HKCU\Control Panel\Desktop\WindowMetrics	CaptionWidth	-315
HKCU\Control Panel\Desktop\WindowMetrics	MenuHeight	-285
HKCU\Control Panel\Desktop\WindowMetrics	MenuWidth	-285
HKCU\Control Panel\Desktop\WindowMetrics	MenuFont (byte 0)	0xF4
HKCU\Control Panel\Desktop\WindowMetrics	ScrollHeight	-255
HKCU\Control Panel\Desktop\WindowMetrics	ScrollWidth	-255
HKCU\Control Panel\Mouse	MouseSensitivity	10
HKCU\Control Panel\Mouse	MouseSpeed	1
HKCU\Control Panel\Mouse	MouseThreshold1	6
HKCU\Control Panel\Mouse	MouseThreshold2	10
HKCU\Control Panel\Mouse	DoubleClickSpeed	500
HKCU\Control Panel\Mouse	DoubleClickHeight	4
HKCU\Control Panel\Mouse	DoubleClickWidth	4

HKCU\Software\Microsoft\Windows\CurrentVersion\Explorer	ShellState (byte 4)	0x33
---	------------------------	------

## Restore Defaults Overview

A utility program called **Restore Pointing Defaults** is included with Pointing Wizard. This allows you to change the pointing settings back to the Windows default values at any time. You might never need this, but it is there if you do.

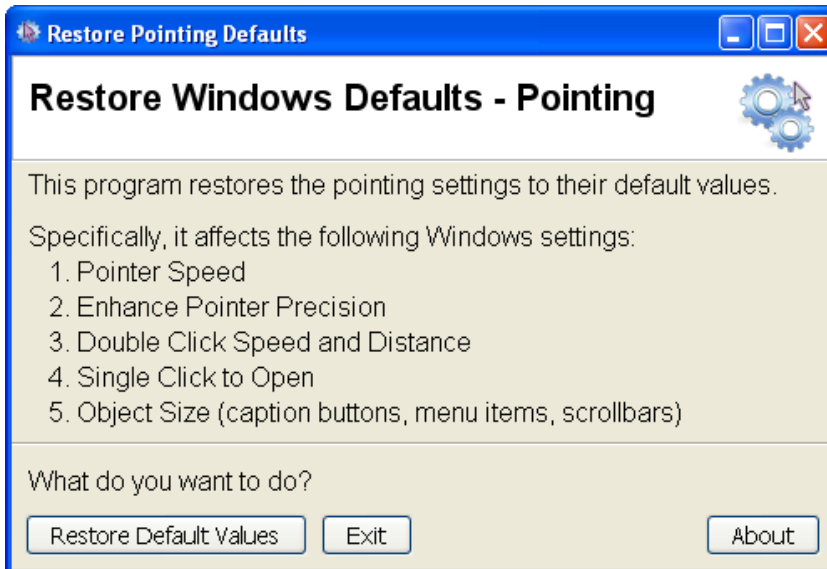
One scenario where you might want to restore defaults is in an assistive technology center that conducts computer access assessments. In that situation, multiple individuals might share a single Windows account. Because you may be adjusting pointing settings frequently during each computer access assessment, you may want to restore defaults before beginning an assessment with a new individual. This ensures a known starting point for that assessment.

Note that when you restore defaults, the default settings will replace whatever settings were previously active. If you think you might want to go back to the previously active settings for any reason, use the [Batch File Feature](#) to store those settings BEFORE restoring the defaults.

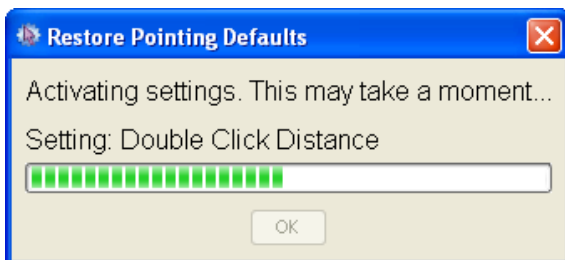
Refer to [How to Restore Defaults](#) for details about using the **Restore Pointing Defaults** program.

## How to Restore Defaults

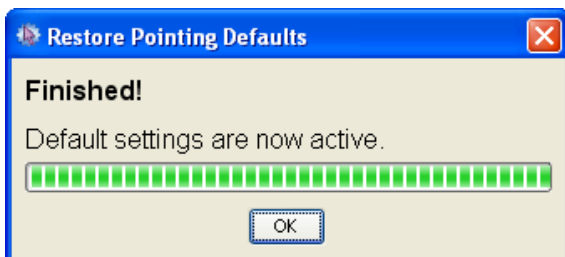
To change the pointing settings back to the Windows default values at any time, you can use the **Restore Pointing Defaults** utility included with Pointing Wizard. To launch it, open the Start menu, and select **Restore Pointing Defaults** from the Pointing Wizard item. The main screen looks like this:



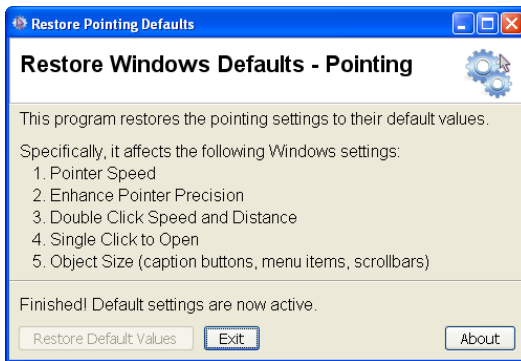
To restore default values, click the **Restore Default Values** button on the main screen. This will start restoring each of the settings listed, showing you each setting as it progresses:



When it's done, just click **OK** on the dialog box:



Then click **Exit** to quit the program. Your pointing settings will now be back at their default values.



**Note:** when you restore defaults, the default settings will replace whatever settings were previously active. If you think you might want to go back to the previously active settings for any reason, use the [Batch File Feature](#) to store those settings BEFORE restoring the defaults.

## About KPR

Koester Performance Research (KPR) enhances the usability and accessibility of information and assistive technologies through research, development, and education. We are interested in all aspects of the interaction between people and technology, with an emphasis on the needs of people who have disabilities. We pursue this work through a combination of KPR-initiated projects and consultations with others on usability and research design.

**Mailing address:** 2408 Antietam, Ann Arbor, MI 48105

**Website:** [www.kpronline.com](http://www.kpronline.com)

If you have suggestions about the Pointing Wizard, we hope you will send them to us at **support@kpronline.com**. We want to make sure the Pointing Wizard is fully meeting your needs.

## Technical Support

The Pointing Wizard has been extensively tested and designed with the highest quality and ease of use in mind. We hope that you will have a great experience with it.

If you do have any questions or comments, please contact us at **support@kpronline.com**.

As we develop additional support resources, we will list those on our website at **www.kpronline.com**. You may want to check there regularly to see what's new.

Thanks for using the Pointing Wizard!

## Development Team

Pointing Wizard research and development is led by Koester Performance Research (KPR), in collaboration with the University of Pittsburgh and the Ann Arbor Center for Independent Living. Support for development was provided by Phase I and Phase II SBIR grants from the National Institutes of Health.

Team members:

- Heidi Horstmann Koester, KPR
- Jennifer Mankowski, KPR
- Edmund LoPresti, KPR
- Glen Ashlock, AACIL
- Rich Simpson, Univ of Pittsburgh
- Wally Welch, Peach Mt. Computing

The team also thanks all those who participated in field studies on the Pointing Wizard.

# Index

## A

About KPR (69)  
Accessibility (4)  
Advanced Selection (21)

## B

Basic Selection (20)  
Basic Target Selection (11)  
Basic Target Selection Task (16)  
Batch Files (60)  
    Batch File Content (64)  
    Batch File Overview (60)  
    Save Batch File (61)  
    Using Batch Files (63)  
Buttons (7)

## C

Contact Us (69)

## D

Double-click Distance (44)  
Double-click Pointing Task (24)  
Double-click Pointing Task - Introduction (23)  
Double-click Time (43)

## E

Enhance Pointer Precision (42)  
Exit Button (7)

## F

Finish Button (7)  
Finish Screen (35)

## G

Getting Started (5)

## H

How Recommendations Are Determined (46)

## K

Keyboard Access (4)  
Koester Performance Research (69)  
KPR (69)

## L

Learn More Button (36)

## M

Main Window (6)

## N

Navigation (7)

## O

Object Size (38)  
Overview (3)

## P

Pointer Speed (41)  
Pointing Wizard, Accessibility (4)  
Pointing Wizard, Overview (3)  
Practice with the Recommended Settings (15)  
Program Buttons (7)  
Program Introduction (6)

## R

Recommendations, How They are Determined (46)

Recommended Settings (13)

Report (49)  
    Final Settings (58)  
    Original Settings (51)  
    Overview (49)  
    Recommended Settings (53)  
    Results of Basic Target Selection (52)  
    Results of Second Target Task (54)  
    Summary Section (50)  
    Viewing Reports (48)  
Restore Defaults (66)  
    Restore Defaults Overview (66)  
    How to Restore Defaults (67)  
Review Your Results (17)  
Review Your Results - Double-click (29)

## S

Screen Elements (6)  
Select Your Double-click Settings (32)  
Select Your Double-click Settings - Advanced (33)  
Select Your Settings - Advanced (21)  
Select Your Settings - Basic (20)

## T

Technical Support (70)  
Text Size (4)  
Title Bar (6)  
Try the Recommended Settings (15)

## V

View Double-click Recommendations (25)  
View Recommendations (13)  
View Report (48)

## W

Welcome Page (8)